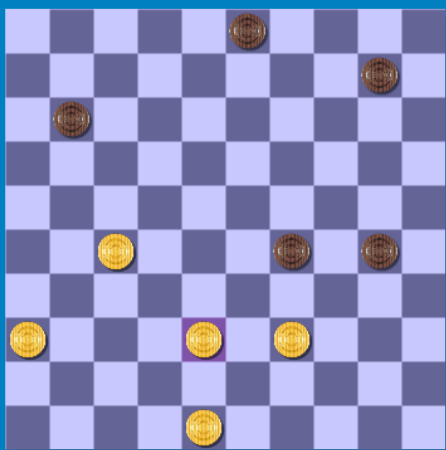
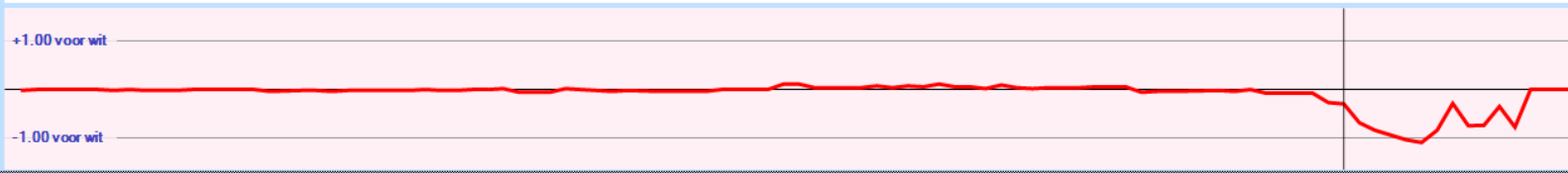


Wit: **Cor Stehouwer**
 Zwart: **Wim van Kasteren**
 Resultaat: **1-1**
 Datum: **16-3-2017**
 Toernooi: **Simultaan Cor**
 Plek: **De Huif**
 Ronde:



1. 32-28 20-25 2. 37-32 14-20 3. 41-37 10-14 4. 31-27 4-10 5. 36-31 17-21 6. 46-41 21-26 7. 41-36 19-23 8. 28x19 14x23 9. 33-28 9-14 10. 28x19 14x23 11. 39-33 11-17 12. 27-21 16x27 13. 31x22x11 6x17 14. 44-39 1-6 15. 50-44 6-11 16. 32-27 13-19 17. 27-21 8-13 18. 21-16 10-14 19. 37-31 26x37 20. 42x31 5-10 21. 34-30 25x34 22. 40x29 23x34 23. 39x30 20-25 24. 44-39 25x34 25. 39x30 14-20 26. 49-44 20-25 27. 44-39 25x34 28. 39x30 10-14 29. 47-42 14-20 30. 30-25 20-24 31. 45-40 18-23 32. 42-37 17-22 33. 31-26 12-18 34. 37-32 7-12 35. 16x7 2x11 36. 32-27 22x31 37. 26x37 12-17 38. 37-32 15-20 39. 25x14 19x10 40. 40-34 13-19 41. 32-27 24-30 42. 35x24x13x22 17x28x39x30 43. 43-39 23-29 44. 27-22 (44. 27-21 | 29-34 45. 38-32 34x43 46. 48x39 29-34 47. 38-32 34x43 48. 38-32 29-34 49. 38-32 29-34 50. 38-32 29-34 51. 38-32 29-34 52. 38-32 29-34 53. 38-32 29-34 54. 38-32 -0.35 at 17 ply)
 ... 30-35 45. 38-33 29x38 46. 39-34 3-8 47. 36-31 10-14 48. 31-27 11-16 49. 22-17 14-20 (14-19 !! 50. 17x8 12x21x32 51. 17x8 12x21x32 52. 17x8 12x21x32 53. 17x8 12x21x32 54. 17x8 12x21x32 55. 17x8 12x21x32 56. 17x8 12x21x32 57. 17x8 12x21x32 58. 17x8 12x21x32 59. 17x8 12x21x32 and black wins -200.00 at 19 ply)
 50. 27-22 20-25 51. 22-18 0.00 at 18 ply

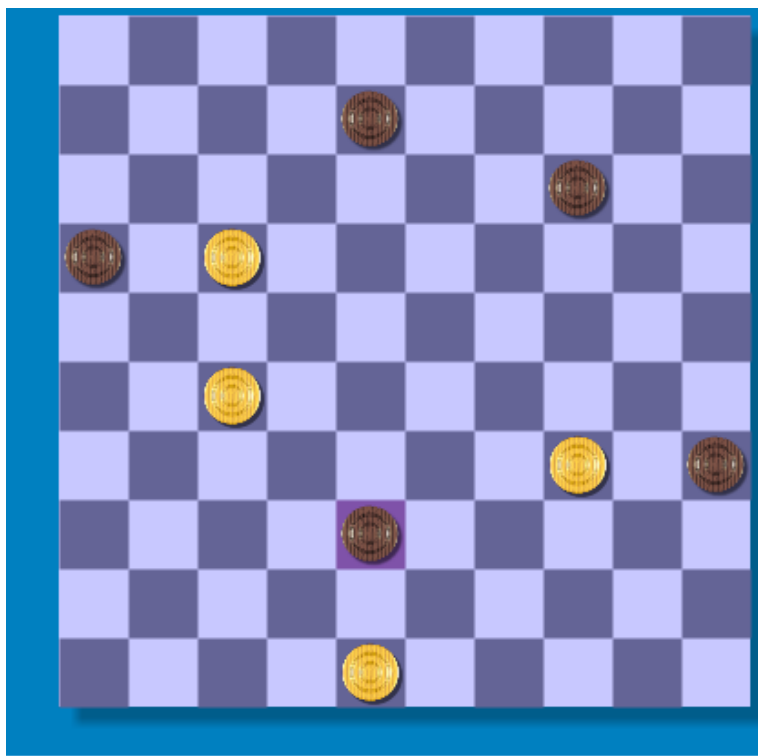


Analyse huidige stelling

zet	diepte	Score	Zet van tegenstander
36-31	8	-0.056	10-14 27-21 14-19 21-16
27-21	8	-0.056	10-14 36-31 10-14 36-31
38-32	8	-0.360	30-35 27-21 10-14 32-27
39-33	8	-0.576	30-35 33x24 35-40 24-20
27-22	8	-0.648	30-35 36-31 35-40 38-32

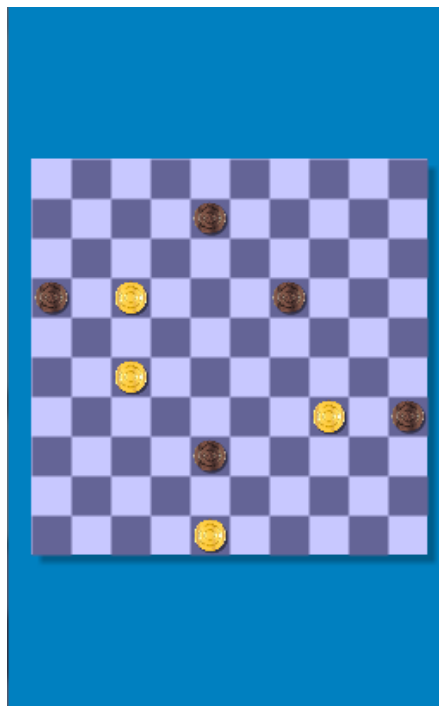
49^e zet:

Ook na 14-19 in plaats van 14-20 loopt het precies op tempo remise!



Analyse huidige stelling

zet	diepte	Score	Zet van tegenstander
14-19	8	0.656	27-21 16x27 17-11 27-31
38-43	7	0.000	48x39 14-19 39-33
14-20	7	-0.064	27-22 20-24 17x8



Analyse huidige stelling

zet	diepte	Score	Zet van tegenstander
27-21	8	-0.768	16x27 17-11 27-31 11-6

50. 27-21

(50. 17x8 12x21x32 51. 17x8 12x21x32 52. 17x8 12x21x32 53. 17x8 12x21x32 54. 17x8 12x21x32 55. 17x8 12x21x32 56. 17x8 12x21x32 57. 17x8 12x21x32 58. 17x8 12x21x32 59. 17x8 12x21x32 and black wins -200.00 at 19 ply)

... 16x27 51. 17-11 27-32 52. 11-7

(52. 11-6 32-37 53. 6-1 38-42 54. 1-18 42-47 55. 18-22 37-41 56. 34-30 35x24 57. 22-17 24-30 58. 17x3 41-46)

... 8-12 53. 7x18 19-23 54. 18x29 32-37 55. 29-23 38-42 56. 23-18 42-47

+1.00 voor wit

-1.00 voor wit

