

Analyse Dragon Dammen

1. 34-29 19-23 2. 40-34 14-19 3. 44-40 10-14 4. 50-44 5-10 5. 29-24 20x29 6. 33x24 19x30 7. 34x25 14-19 8. 38-33 10-14 9. 42-38 17-21 10. 47-42 11-17 11. 40-34 21-26 12. 34-30 7-11 13. 44-40 1-7 14. 39-34 17-22 15. 34-29 23x34 16. 40x29 22-27 17. 31x22 18x27 18. 32x21 26x17 19. 38-32 17-22 20. 43-38 11-17 21. 36-31 6-11 22. 32-28 16-21 23. 31-26 13-18 24. 37-32 11-16 25. 41-37 7-11 26. 30-24 19x30 27. 35x24 14-19 28. 24x13 8x19 29. 29-24 19x30 30. 25x34 9-13 31. 49-44 3-8 32. 34-29 13-19 33. 44-39 19-24 34. 29x20 15x24 35. 39-34 4-10 36. 34-29 10-15 37. 29x20 15x24 38. 45-40 8-13 39. 40-34 2-8 40. 48-43 22-27 41. 46-41 27-31 42. 41-36 21-27 43. 32x21 16x27 44. 37-32 18-23 45. 28x19x30 31-37 46. 42x31x22 17x28x39x48 47. 30-25 48x30 48. 25x34 11-17

( 13-19 is interessant 49. 34-29 12-18 50. 32-28 8-12 51. 36-31 12-17 52. 31-27 11-16 53. 38-32 18-23 54. 29x18 19-24 55. 18-13 24-29 56. 13-9 29-34 57. 9-3 34-39 58. 3x21 39-43 +2.80 at 25 ply )

**49. 38-33 12-18**

( 13-19 is interessant 50. 34-29 17-22 51. 36-31 12-18 52. 32-28 8-13 53. 28x17 19-23 54. 17-11 23x34 55. 33-29 34x23 56. 11-7 18-22 57. 31-27 22x31 58. 26x37 23-29 59. 7-2 13-18 and white wins +30.00 at 25 ply )

**50. 36-31**

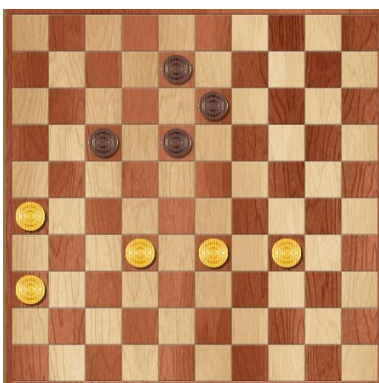
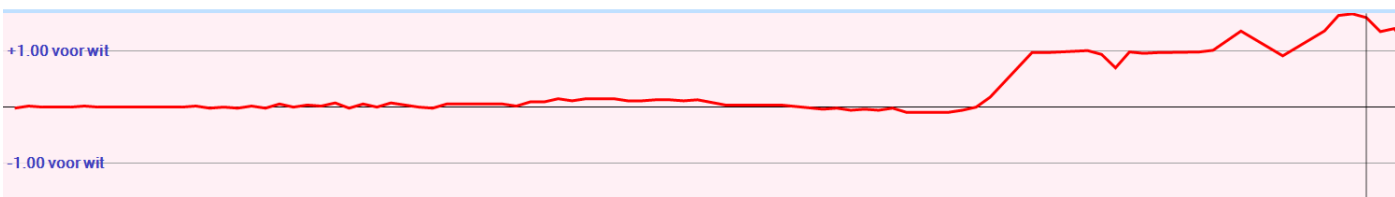
( 50. 34-29 looks better 13-19 51. 33-28 18-23 52. 29x18 19-24 53. 32-27 24-29 54. 27-21 17-22 55. 28x17 29-34 56. 18-12 8-13 57. 12-7 34-40 58. 7-2 40-45 59. 2x19 45-50 60. 17-12 and white wins +30.00 at 24 ply )

... **13-19 51. 33-29**

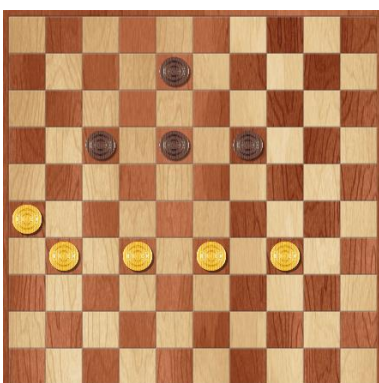
( 51. 34-30 !! 8-12 52. 30-25 18-23 53. 25-20 12-18 54. 20-15 19-24 55. 15-10 18-22 56. 31-27 22x31 57. 26x37 23-29 58. 10-4 29x38x27 59. 4x36 24-29 60. 36-47 29-34 61. 47-33 and white wins +30.00 at 23 ply )

... **8-12 52. 32-28 +0.04 at 27 ply**

( 52. 32-27 !! 17-22 53. 27-21 22-28 54. 31-27 19-23 55. 21-16 12-17 56. 26-21 17x26 57. 16-11 28-32 58. 27x38 23-28 59. 29-24 26-31 60. 11-7 28-33 61. 38x29 31-37 62. 7-2 +0.69 at 26 ply )



John speelt 50. 36-31?



John speelt 51. 33-29?

## Analyse Kingsrow

1. 34-29 {34-29(0/28)\* 34-30(0/29)\* 31-27(0/31)? 32-27(0/31)? 31-26(0/28)? 32-28(0/26)? 33-29(2/26)? 33-28(2/26)? 35-30(6/26)?}  
19-23 {17-22(0/26)\* 17-21(0/27)\* 20-24(0/29)? 20-25(0/27)? 18-22(0/24)? 19-23(0/24)? 19-24(-2/25)? 18-23(-4/26)? 16-21(-6/29)?}
2. 40-34 {31-26(0/23)\* 40-34(2/21)? 31-27(2/20)? 39-34(2/19)? 32-27(2/17)? 33-28(2/16)? 32-28(4/17)?}  
14-19 {14-19(2/20)\* 20-25(0/21)? 17-21(0/16)? 17-22(-2/18)? 13-19(-2/16)? 20-24(-2/16)? 23-28(-4/13)?}
3. 44-40 {44-40(2/17)\* 45-40(2/19)\* 31-26(4/15)? 32-27(4/15)? 32-28(4/15)? 33-28(4/14)? 31-27(10/7)?}  
10-14 {19-24(2/16)\* 10-14(0/20)? 20-25(0/18)? 17-21(0/14)? 20-24(-2/21)? 9-14(-2/12)? 17-22(-2/12)?}
4. 50-44 {29-24(0/19)\* 50-44(2/17)? 32-28(2/14)? 31-26(4/13)? 33-28(6/9)? 49-44(8/5)? 32-27(10/6)?}  
5-10 {19-24(2/16)\* 20-25(0/16)? 4-10(-2/10)? 17-21(-2/10)? 17-22(-2/10)?}
5. 29-24 {diepte 20, 3.9 sec, 29-24,0 32-28,4 33-28,4 31-26,4 31-27,8 32-27,18 35-30,100 34-30,208 hv 29-24 20x29 33x24 19x30 34x25 15-20 35-30 10-15 32-28 23x32 37x28}  
20x29 {20x29(0/12)\* 19x30(-2/1)?}
6. 33x24 {33x24(0/11)\*}  
19x30 {19x30(0/10)\*}
7. 34x25 {34x25(0/9)\*}  
14-19 {17-22(0/8)\* 14-19(-2/6)? 15-20(-2/6)? 13-19(-2/5)? 17-21(-2/4)?}
8. 38-33 {35-30(-2/5)\* 39-33(0/8)? 40-34(0/6)? 39-34(0/4)? 31-26(2/2)?}  
10-14 {diepte 18, 4.5 sec, 9-14,0 10-14,0 16-21,0 17-21,-2 17-22,-4 18-22,-4 19-24,-20 23-29,-102 15-20,-212 23-28,-414 hv 9-14 42-38 15-20 47-42 10-15 31-26 4-9 37-31 17-21 26x17 11x22}
9. 42-38 {diepte 18, 4.0 sec, 42-38,0 35-30,0 43-38,4 33-29,4 31-26,6 40-34,6 32-28,6 31-27,8 33-28,8 32-27,8 25-20,104 39-34,308 hv 42-38 19-24 47-42 24-29 33x24 23-28 32x23 18x20 35-30 12-18 37-32}  
17-21 {diepte 18, 3.9 sec, 15-20,0 19-24,0 17-21,0 17-22,-2 4-10,-2 18-22,-2 14-20,-4 23-28,-4 16-21,-80 23-29,-102 hv 15-20 47-42 17-21 39-34 21-26 44-39 4-10 34-29 23x34 40x29 10-15}
10. 47-42 {diepte 19, 5.6 sec, 35-30,0 47-42,0 40-34,0 33-29,2 31-26,4 33-28,4 32-28,4 31-27,6 32-27,10 48-42,16 25-20,104 39-34,324 hv 35-30 21-27 31x22 18x27 32x21 16x27 47-42 11-17 30-24 19x30 25x34}  
11-17 {diepte 19, 5.0 sec, 15-20,0 11-17,0 21-26,0 12-17,0 21-27,0 14-20,-2 4-10,-4 23-28,-78 23-29,-100 19-24,-196 18-22,-200 hv 15-20 40-34 21-26 34-29 23x34 39x30 11-17 44-39 6-11 32-28 1-6}
11. 40-34 {diepte 19, 3.9 sec, 35-30,0 40-34,0 32-28,2 33-29,4 33-28,4 31-27,4 31-26,6 32-27,12 25-20,104 39-34,304 hv 35-30 6-11 30-24 19x30 25x34 13-19 32-28 23x32 37x28 18-23 42-37}  
21-26 {diepte 18, 5.0 sec, 6-11,2 21-26,2 7-11,0 15-20,0 4-10,0 14-20,-2 23-29,-96 23-28,-98 21-27,-98 17-22,-196 19-24,-198 18-22,-202 hv 6-11 44-40 21-26 34-29 23x34 40x29 1-6 35-30 19-23 39-34 14-19}
12. 34-30 {diepte 19, 4.8 sec, 44-40,0 34-30,0 34-29,2 33-29,2 45-40,4 32-28,4 33-28,4 31-27,4 35-30,6 32-27,34 25-20,100 hv 44-40 6-11 34-30 15-20 39-34 4-10 32-28 23x32 37x28 26x37 41x32}  
7-11 {diepte 18, 3.8 sec, 6-11,2 7-11,0 15-20,0 4-10,0 14-20,0 17-22,-2 17-21,-2 18-22,-4 16-21,-82 23-29,-96 23-28,-98 19-24,-200 hv 6-11 30-24 19x30 25x34 23-28 32x23 18x40 45x34 17-22 31-27 22x31}
13. 44-40 {diepte 19, 4.1 sec, 44-40,0 30-24,0 32-28,2 39-34,2 31-27,2 45-40,4 33-28,4 33-29,4 32-27,30 25-20,102 hv 44-40 1-7 30-24 19x30 25x34 14-20 31-27 17-21 49-44 11-17 34-30}  
1-7 {diepte 19, 4.9 sec, 1-7,0 14-20,0 4-10,0 17-22,-2 17-21,-2 2-7,-6 23-28,-42 15-20,-82 16-21,-92 18-22,-94 23-29,-98 19-24,-198 hv 1-7 30-24 19x30 25x34 14-20 34-30 9-14 31-27 4-9 30-25 17-21}
14. 39-34 {diepte 19, 3.7 sec, 49-44,0 30-24,2 40-34,2 39-34,2 31-27,2 33-29,2 33-28,4 32-28,4 32-27,34 25-20,104 hv 49-44 15-20 30-24 20x29 33x24 19x30 25x34 14-20 34-30 13-19 30-25}  
17-22 {diepte 20, 6.1 sec, 17-22,2 18-22,2 14-20,0 17-21,0 4-10,0 16-21,-2 23-28,-34 15-20,-48 23-29,-86 19-24,-196 hv 17-22 34-29 23x34 30x39 11-17 40-34 7-11 34-30 17-21 49-44 21-27}
15. 34-29 {diepte 19, 3.5 sec, 34-29,2 31-27,4 43-39,4 32-28,6 33-28,18 33-29,32 32-27,36 25-20,108 30-24,310 49-44,414 hv 34-29 23x34 30x39 11-17 35-30 15-20 40-35 4-10 31-27 22x31 36x27}  
23x34 {diepte 7, 0.0 sec, 23x34,-2 hv 23x34 40x29 4-10 49-44 22-27 31x22 18x27 32x21}
16. 40x29 {diepte 22, 4.8 sec, 40x29,2 30x39,2 hv 40x29 19-23 31-27 23x34 30x39 22x31 36x27 11-17 35-30 17-21 45-40}  
22-27 {diepte 19, 3.7 sec, 19-23,0 11-17,0 12-17,0 22-27,-2 4-10,-4 22-28,-72 15-20,-82 16-21,-90 18-23,-184 14-20,-202 19-24,-206 hv 19-23 31-27 23x34 30x39 22x31 36x27 11-17 35-30 17-21 41-36 14-20}

17. 31x22 {diepte 21, 3.3 sec, 31x22,0 32x21,2 hv 31x22 18x27 32x21 26x17 37-32 17-22 41-37 16-21 46-41 21-26 36-31}  
 18x27 {diepte 7, 0.0 sec, 18x27,-6 hv 18x27 32x21 26x17 45-40 13-18 37-32 18-23 29x18}
18. 32x21 {diepte 7, 0.0 sec, 32x21,-10 hv 32x21 26x17 29-24 17-22 45-40 13-18 24x13 8x19}  
 26x17 {diepte 21, 5.4 sec, 26x17,-2 16x27,-86 hv 26x17 37-32 16-21 41-37 17-22 46-41 11-17 32-28 21-26 37-32 12-18}
19. 38-32 {diepte 17, 3.4 sec, 37-32,0 45-40,0 36-31,0 38-32,0 49-44,2 37-31,2 29-24,4 43-39,4 33-28,4 30-24,6 29-23,106 25-20,296 hv 37-32 16-21 45-40 12-18 41-37 17-22 37-31 19-23 29-24 14-20 25x14}  
 17-22 {diepte 18, 5.9 sec, 19-23,2 16-21,2 13-18,0 12-18,0 17-22,0 17-21,-4 4-10,-10 15-20,-80 19-24,-112 14-20,-194 hv 19-23 29x18 12x23 42-38 17-22 37-31 23-29 33x24 22-28 32x23 14-20}
20. 43-38 {diepte 18, 5.9 sec, 37-31,0 43-38,0 42-38,2 32-27,2 45-40,2 32-28,4 36-31,4 49-44,6 43-39,8 30-24,10 29-23,110 33-28,206 29-24,234 25-20,292 hv 37-31 12-18 41-37 7-12 43-38 19-23 46-41 23x34 30x39 14-20 25x14}  
 11-17 {diepte 18, 5.5 sec, 16-21,0 22-27,0 12-17,-2 13-18,-4 11-17,-4 4-10,-16 22-28,-68 15-20,-78 19-24,-176 12-18,-180 19-23,-182 14-20,-192 hv 16-21 49-43 21-26 32-28 13-18 28x17 11x22 30-24 19x30 35x24 14-19}
21. 36-31 {diepte 18, 5.8 sec, 32-28,-6 37-31,-4 49-43,-2 36-31,0 45-40,0 32-27,2 49-44,4 29-24,6 30-24,8 48-43,10 29-23,196 33-28,206 25-20,298 hv 32-28 16-21 37-32 21-27 32x21 17x26 28x17 12x21 29-24 8-12 49-43}  
 6-11 {diepte 18, 6.1 sec, 7-11,0 6-11,-2 13-18,-4 17-21,-4 4-10,-18 16-21,-22 15-20,-84 22-28,-90 22-27,-96 14-20,-160 12-18,-178 19-23,-184 19-24,-198 hv 7-11 31-27 22x31 37x26 2-7 32-28 17-21 26x17 11x22 28x17 12x21}
22. 32-28 {diepte 18, 4.8 sec, 32-28,-4 31-27,2 32-27,2 41-36,6 45-40,6 31-26,8 49-43,12 29-24,80 30-24,90 29-23,192 33-28,198 25-20,296 48-43,366 49-44,390 hv 32-28 16-21 41-36 21-27 29-23 13-18 45-40 18x29 33x13 22x33 38x29}  
 16-21 {diepte 19, 5.2 sec, 16-21,-2 13-18,-10 12-18,-18 4-10,-22 15-20,-88 22-27,-102 19-24,-128 19-23,-196 17-21,-206 14-20,-214 hv 16-21 49-43 21-27 41-36 13-18 46-41 8-13 30-24 19x30 35x24 14-19}
23. 31-26 {diepte 18, 5.4 sec, 41-36,-4 49-43,-2 37-32,0 49-44,0 38-32,4 30-24,6 31-26,8 48-43,14 29-24,16 29-23,28 45-40,116 31-27,202 28-23,204 25-20,440 hv 41-36 13-18 45-40 21-27 29-23 18x29 33x13 22x33 38x29 8x19 31x22}  
 13-18 {diepte 18, 3.7 sec, 21-27,8 13-18,6 11-16,-6 4-10,-20 12-18,-26 15-20,-82 22-27,-84 19-24,-122 14-20,-212 19-23,-276 hv 21-27 49-43 13-18 37-32 11-16 32x21 16x27 29-24 18-23 24x13 23x32}
24. 37-32 {diepte 19, 4.2 sec, 38-32,2 37-32,2 49-43,4 30-24,8 29-23,8 45-40,12 41-36,16 49-44,18 48-43,20 37-31,40 29-24,90 28-23,194 25-20,400 hv 38-32 21-27 32x21 11-16 42-38 16x27 30-24 19x30 35x24 27-32 38x27}  
 11-16 {diepte 19, 3.8 sec, 21-27,4 11-16,0 9-13,-16 8-13,-30 15-20,-112 19-24,-136 22-27,-182 14-20,-234 19-23,-268 18-23,-300 4-10,-354 hv 21-27 32x21 11-16 41-37 16x27 37-32 4-10 32x21 19-24 30x19 14x43}
25. 41-37 {diepte 19, 4.9 sec, 49-43,2 42-37,2 41-37,6 45-40,8 29-23,12 30-24,14 48-43,18 49-44,18 41-36,24 29-24,26 28-23,192 32-27,210 25-20,372 hv 49-43 21-27 32x21 16x27 42-37 27-32 38x27 22x42 48x37 4-10 30-24}  
 7-11 {diepte 19, 3.8 sec, 21-27,6 8-13,-12 9-13,-14 7-11,-24 22-27,-94 15-20,-116 19-24,-138 14-20,-234 18-23,-276 19-23,-306 4-10,-308 hv 21-27 32x21 16x27 37-32 4-10 32x21 19-24 30x19 14x43 49x38 8-13}
26. 30-24 {diepte 19, 5.5 sec, 45-40,-40 49-44,-36 48-43,-30 49-43,-22 37-31,-16 30-24,-14 29-23,-14 46-41,-8 29-24,-6 28-23,190 32-27,216 25-20,372 hv 45-40 8-13 37-31 2-7 30-24 19x30 35x24 14-19 31-27 19x30 25x34}  
 19x30 {diepte 7, 0.0 sec, 19x30,-24 hv 19x30 35x24 9-13 45-40 21-27 32x21 16x27 37-32 11-16}
27. 35x24 {diepte 22, 4.4 sec, 35x24,-16 25x34,-8 hv 35x24 14-19 24x13 8x19 45-40 19-24 29x20 15x24 40-34 4-10 49-44}  
 14-19 {diepte 19, 3.8 sec, 14-19,-14 14-20,-22 8-13,-34 9-13,-40 4-10,-46 2-7,-52 15-20,-118 21-27,-150 22-27,-248 18-23,-408 hv 14-19 24x13 8x19 45-40 19-24 29x20 15x24 40-34 4-10 49-44 10-15}
28. 24x13 {diepte 7, 0.0 sec, 24x13,-28 hv 24x13 8x19 29-23 18x29 33x13 22x33 38x29 9x18 37-31}  
 8x19 {diepte 7, 0.0 sec, 8x19,-28 hv 8x19 29-23 18x29 33x13 22x33 38x29 9x18 37-31 18-22}
29. 29-24 {diepte 19, 4.2 sec, 29-24,-16 45-40,-8 49-44,-8 48-43,-6 46-41,0 29-23,0 49-43,2 37-31,26 25-20,108 28-23,184 32-27,214 hv 29-24 19x30 25x34 9-14 34-29 14-20 49-44 3-9 45-40 9-14 46-41}  
 19x30 {diepte 7, 0.0 sec, 19x30,-14 hv 19x30 25x34 9-14 34-29 21-27 32x21 16x27 46-41 3-9}
30. 25x34 {diepte 7, 0.0 sec, 25x34,-14 hv 25x34 9-14 34-29 3-9 46-41 21-27 32x21 16x27}  
 9-13 {diepte 19, 5.7 sec, 2-7,-10 9-13,-14 2-8,-14 4-10,-14 9-14,-16 3-8,-16 15-20,-32 18-23,-86 21-27,-94 22-27,-98 hv 2-7 45-40 3-8 28-23 18x29 34x23 21-27 32x21 16x27 46-41 9-14}

- 31.** 49-44 {diepte 18, 3.9 sec, 34-29,-16 49-44,-16 45-40,-14 48-43,-12 49-43,0 37-31,0 46-41,2 34-30,4 28-23,90 33-29,194 32-27,196 hv 34-29 13-19 45-40 3-9 49-44 19-24 29x20 15x24 40-34 9-14 44-40}  
**3-8** {diepte 19, 4.5 sec, **3-9,-12 4-10,-12** 13-19,-20 15-20,-22 **3-8,-22** 4-9,-28 2-7,-30 2-8,-30 21-27,-36 22-27,-92 18-23,-136 hv 3-9 45-40 9-14 46-41 14-19 34-29 21-27 32x21 16x27 37-32 11-16}
- 32.** 34-29 {diepte 19, 4.9 sec, 45-40,-34 34-29,-28 44-40,-26 48-43,-18 44-39,-12 46-41,-4 37-31,0 34-30,62 33-29,192 32-27,204 28-23,488 hv 45-40 13-19 34-29 8-13 44-39 15-20 28-23 19x28 32x23 21-27 39-34}  
13-19 {diepte 20, 5.4 sec, 13-19,-22 4-10,-56 4-9,-60 2-7,-64 15-20,-72 22-27,-96 21-27,-98 18-23,-498 hv 13-19 45-40 8-13 40-34 15-20 44-40 19-24 28-23 20-25 29x20 25x14}
- 33.** 44-39 {diepte 19, 3.5 sec, **45-40,-26** 44-40,-16 48-43,-16 **44-39,-14** 29-23,-8 46-41,-2 37-31,14 29-24,16 32-27,220 28-23,372 hv 45-40 8-13 40-34 15-20 44-40 19-24 28-23 20-25 29x20 25x14 32-28}  
**19-24** {diepte 19, 3.9 sec, **15-20,-20** 8-13,-28 **19-24,-32** 4-10,-54 21-27,-116 2-7,-116 19-23,-158 4-9,-246 22-27,-330 18-23,-486 hv 15-20 39-34 19-24 45-40 20-25 29x20 25x14 34-29 2-7 40-35 4-10}
- 34.** 29x20 {diepte 7, 0.0 sec, 29x20,-24 hv 29x20 15x24 39-34 4-10 46-41 21-27 32x21 16x27 45-40}  
15x24 {diepte 7, 0.0 sec, 15x24,-24 hv 15x24 39-34 4-10 46-41 21-27 32x21 16x27 45-40}
- 35.** 39-34 {diepte 19, 3.9 sec, 39-34,-34 28-23,14 48-43,100 46-41,112 37-31,118 45-40,360 32-27,422 33-29,434 hv 39-34 8-13 34-29 2-8 29x20 18-23 28x19 13x15 32-28 8-13 46-41}  
**4-10** {diepte 20, 5.6 sec, **8-13,-38** 4-9,-62 2-7,-80 **4-10,-86** 24-29,-118 22-27,-154 24-30,-156 18-23,-216 21-27,-234 hv 8-13 45-40 4-10 37-31 10-15 34-29 15-20 40-35 13-19 29-23 18x29}
- 36.** 34-29 {diepte 19, 3.3 sec, 34-29,-78 46-41,-66 45-40,-34 48-43,-22 37-31,-16 33-29,52 28-23,54 34-30,80 32-27,330 hv 34-29 10-15 29x20 15x24 45-40 8-13 40-34 22-27 46-41 18-22 41-36}  
**10-15** {diepte 20, 3.9 sec, **24-30,-84** **10-15,-118** 8-13,-172 21-27,-190 22-27,-216 2-7,-230 18-23,-528 10-14,-600 hv 24-30 29-23 18x29 33x35 22x33 38x29 21-27 32x21 16x27 42-38 8-13}
- 37.** 29x20 {diepte 7, 0.0 sec, 29x20,-16 hv 29x20 15x24 46-41 21-27 32x21 16x27 37-32 11-16 32x21}  
15x24 {diepte 7, 0.0 sec, 15x24,-16 hv 15x24 46-41 21-27 32x21 16x27 37-32 11-16 32x21 16x27}
- 38.** 45-40 {diepte 20, 5.2 sec, 45-40,-118 46-41,-82 48-43,-20 37-31,-10 33-29,12 28-23,60 32-27,252 hv 45-40 22-27 28-22 17x39 26x6 24-29 32x21 16x27 46-41 29-34 40x29}  
**8-13** {diepte 21, 6.7 sec, **22-27,-102** **8-13,-118** 2-7,-182 24-30,-268 21-27,-278 24-29,-318 18-23,-384 hv 22-27 46-41 27-31 41-36 21-27 32x21 16x27 40-34 11-16 37-32 2-7}
- 39.** 40-34 {diepte 20, 3.8 sec, 46-41,-96 40-34,-94 37-31,-50 48-43,-38 33-29,8 40-35,10 28-23,30 32-27,312 hv 46-41 21-27 32x21 16x27 37-32 24-30 32x21 30-35 40-34 13-19 41-37}  
**2-8** {diepte 21, 3.7 sec, **22-27,-114** **2-8,-166** 13-19,-222 2-7,-268 24-30,-288 24-29,-330 21-27,-400 18-23,-478 hv 22-27 46-41 27-31 41-36 21-27 32x21 16x27 48-43 2-8 37-32 13-19}
- 40.** 48-43 {diepte 21, 5.2 sec, **37-31,-178** 46-41,-166 **48-43,-102** 34-29,-60 34-30,44 28-23,64 32-27,192 33-29,198 hv 37-31 22-27 31x22 18x27 28-23 13-18 34-29 24-30 23-19 30-35 19-14}  
22-27 {diepte 21, 3.4 sec, 22-27,-104 13-19,-298 21-27,-306 24-29,-318 24-30,-340 18-23,-396 hv 22-27 46-41 18-22 41-36 13-18 34-29 24-30 43-39 8-13 28-23 27-31}
- 41.** 46-41 {diepte 20, 4.2 sec, 46-41,-138 34-29,-20 43-39,1 33-29,70 37-31,90 34-30,108 28-22,340 28-23,410 hv 46-41 18-22 41-36 12-18 34-29 24-30 43-39 8-12 28-23 27-31 36x27}  
**27-31** {diepte 21, 3.4 sec, **18-22,-134** 13-19,-196 **27-31,-254** 24-30,-274 24-29,-314 18-23,-420 17-22,-684 hv 18-22 41-36 13-18 37-31 8-13 34-29 24-30 43-39 13-19 42-37 30-35}
- 42.** 41-36 {diepte 19, 4.1 sec, 41-36,-254 34-29,3 43-39,56 34-30,74 33-29,128 28-22,174 32-27,200 28-23,384 hv 41-36 21-27 32x21 16x27 37-32 11-16 32x21 16x27 26x37 27-31 37x26}  
21-27 {diepte 22, 4.6 sec, 21-27,-308 24-30,-452 13-19,-502 18-23,-520 24-29,-660 17-22,-854 18-22,-2708 hv 21-27 32x21 16x27 37-32 11-16 32x21 16x27 26x37 17-21 28-22 18-23}
- 43.** 32x21 {diepte 7, 0.0 sec, 32x21,-36 hv 32x21 16x27 43-39 18-22 37-32 13-19 26x37 11-16}  
16x27 {diepte 7, 0.0 sec, 16x27,-86 hv 16x27 43-39 11-16 37-32 13-19 32x21 16x27 26x37}
- 44.** 37-32 {diepte 21, 5.1 sec, 37-32,-292 34-29,-84 43-39,-5 26-21,1 34-30,108 33-29,114 28-23,600 38-32,734 28-22,862 hv 37-32 11-16 32x21 16x27 26x37 13-19 34-29 27-32 38x27 24-30 29-24}  
**18-23** {diepte 23, 5.9 sec, **11-16,-312** 13-19,-368 24-30,-496 18-22,-518 24-29,-542 **18-23,-628** 31-37,-674 17-22,-1166 17-21,-2620 hv 11-16 32x21 16x27 26x37 27-32 38x27 13-19 37-32 8-13 34-29 24-30}
- 45.** 28x30 {diepte 7, 0.0 sec, 28x30,-80 hv 28x30 31-37 42x22 17x48 30-25 48x30 25x34 11-17 38-33}  
**31-37** {diepte 22, 4.5 sec, **11-16,-574** 17-22,-758 13-18,-810 13-19,-2562 **31-37,-2576** 17-21,-3982 12-18,-3986 hv 11-16 32x21 16x27 26x37 17-21 30-24 21-26 24-20 12-17 20-15 17-21}

46. 42x22 {diepte 7, 0.0 sec, 42x22,-80 hv 42x22 17x48 30-25 48x30 25x34 11-17 38-33 13-19 36-31}  
 17x48 {diepte 7, 0.0 sec, 17x48,-80 hv 17x48 30-25 48x30 25x34 13-19 38-33 11-17 36-31}
47. 30-25 {diepte 16, 4.0 sec, 30-25,-2464 36-31,-422 26-21,56 32-27,114 32-28,172 38-33,416 34-29,2458 30-24,3986 hv 30-25 48x30 25x34 13-19 36-31 19-24 31-27 8-13 38-33 13-19 34-29}  
 48x30 {diepte 7, 0.0 sec, 48x30,-80 hv 48x30 25x34 13-19 38-33 8-13 33-29 11-17 34-30}
48. 25x34 {diepte 7, 0.0 sec, 25x34,-80 hv 25x34 13-19 36-31 8-13 31-27 19-24 38-33}  
 11-17 {diepte 23, 3.5 sec, 12-18,-2628 13-19,-2628 12-17,-2628 13-18,-2628 11-17,-2684 11-16,-2716 hv 12-18 34-29 13-19 32-28 11-16 36-31 8-12 38-32 12-17 31-27 18-23}
49. 38-33 {diepte 23, 5.4 sec, 32-28,-2696 34-29,-2694 38-33,-2684 32-27,-2680 36-31,-2648 34-30,-2640 26-21,1 hv 32-28 13-19 34-29 12-18 38-32 18-23 29x18 19-24 32-27 24-29 27-21}  
 12-18 {diepte 24, 4.2 sec, 13-19,-2704 12-18,-2704 17-22,-2762 13-18,-3974 17-21,-3974 hv 13-19 34-29 12-18 33-28 19-24 29x20 17-22 28x17 18-23 20-15 23-29}
50. 36-31 {diepte 23, 6.6 sec, 33-28,-2704 34-29,-2696 32-28,-2688 34-30,-2654 36-31,-2650 32-27,-2578 33-29,-28 26-21,1 hv 33-28 13-19 34-29 18-23 29x18 19-24 32-27 24-29 27-21 17-22 28x17}  
 13-19 {diepte 25, 6.6 sec, 13-19,-2632 8-12,-2786 17-22,-3970 18-23,-3976 18-22,-3984 17-21,-3986 hv 13-19 34-30 8-12 32-27 19-23 30-25 23-29 33x24 17-22 25-20 22-28}
51. 33-29 {diepte 26, 4.1 sec, 34-30,-2692 32-27,-3 33-29,-3 31-27,-3 34-29,1 33-28,1 32-28,1 26-21,3998 hv 34-30 8-12 30-25 19-24 32-28 18-22 28-23 12-18 23x21 22-28 33x22}  
 8-12 {diepte 23, 4.5 sec, 8-12,-3 17-22,-3 19-23,-2628 8-13,-2652 18-22,-3976 19-24,-3984 18-23,-3986 17-21,-3988 hv 8-12 32-27 17-22 27-21 22-28 31-27 19-23 21-16 12-17 29-24 28-33}
52. 32-28 {diepte 32, 4.9 sec, 32-27,-3 31-27,-3 32-28,-3 34-30,1 29-23,3982 29-24,3984 26-21,3986 hv 32-27 17-22 27-21 22-28 31-27 19-23 21-16 12-17 29-24 28-33 34-30}  
 {diepte 24, 3.7 sec, 18-22,-3 19-24,-3980 19-23,-3982 17-22,-3988 18-23,-3990 17-21,-3992 hv 18-22 29-23 22x33 23x14}

**De winst gaat pas bij zet 51 verloren!**