

Analyse Dragon Dammen

1. 34-30 18-22 2. 30-25 12-18 3. 32-27 7-12 4. 37-32 1-7 5. 31-26 22x31
6. 26x37 18-22 7. 40-34 13-18 8. 34-29 9-13 9. 44-40 16-21 10. 50-44
11-16 11. 32-28 4-9 12. 40-34 6-11 13. 37-31 21-26 14. 41-37 16-21 15.
37-32 26x37 16. 32x41 21-27 17. 42-37 19-23 18. 28x19 14x23 19. 25x14
10x19 20. 47-42

(20. 35-30 *may be better* 15-20 21. 30-24 19x30 22. 34x25x14 9x20 23. 37-32
 23x34 24. 32x21 17x26 25. 39x30 *-0.02 at 17 ply*)

... **15-20 21. 35-30 20-25 22. 44-40 9-14 23. 37-32**

(23. 37-31 *may be better* 11-16 24. 40-35 5-10 25. 41-37 10-15 26. 31-26
-0.18 at 18 ply)

... **11-16 24. 32x21 16x27 25. 42-37 7-11 26. 37-32 17-21 27. 48-42 11-16**
28. 42-37 12-17 29. 40-35

(29. 37-31 *may be better* 5-10 30. 40-35 8-12 31. 31-26 10-15 32. 41-37 27-31 33.
 36x27 22x31x42 34. 38x47 *-0.50 at 20 ply*)

... **8-12 30. 37-31 3-8**

(21-26 *looks better* 31. 32x21 26x37 32. 41x32 16x27 33. 32x21 17x26 34. 46-41
-0.55 at 17 ply) **31. 30-24 -0.87 at 21 ply**

(31. 31-26 ! 5-10 32. 41-37 27-31 33. 36x27 22x31x42 34. 38x47 *-0.43 at 20 ply*)

... **19x30 32. 35x24 13-19 -0.42 at 21 ply**

(14-19 ! 33. 45-40 19x30 34. 40-35 5-10 35. 35x24 21-26 36. 32x21 16x27 37.
 49-44 26x37 38. 41x32x21 17x26 39. 38-32 13-19 40. 24x13 8x19 41. 32-27 22x31
 42. 36x27 12-17 *-1.13 at 20 ply*)

33. 24x13 8x19 34. 49-44

(34. 31-26 *looks better* 5-10 35. 41-37 27-31 36. 36x27 22x31x42 37. 38x47 21-27
 38. 32x21 16x27 39. 46-41 17-22 40. 47-42 12-17 41. 42-38 23-28 42. 41-37 27-32
 43. 38x27 22x31x42 44. 33x22x13x24 *-0.82 at 19 ply*) **5-10 -0.52 at 20 ply**

(21-26 ! 35. 32x21 26x37 36. 41x32 16x27 37. 32x21 17x26 38. 44-40 5-10 39.
 38-32 26-31 40. 36x27 22x31 41. 33-28 12-17 42. 43-38 25-30 43. 34x25 23x34x43
 44. 38x49 18-22 *-1.29 at 19 ply*) **35. 44-40**

(35. 41-37 *is interessant* 21-26 36. 32x21 16x27 37. 44-40 10-15 38. 33-28
 22x33x44x35 39. 31x22x13x24 12-18 40. 46-41 17-22 41. 24-19 22-28 42. 19x10
 15x4 43. 45-40 35x44 44. 34-30 25x34 45. 29x40x49 *-1.12 at 17 ply*)

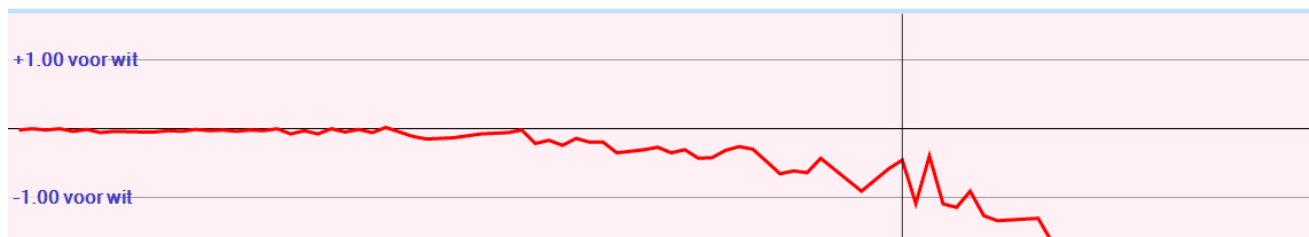
... **10-15 36. 41-37 14-20 37. 40-35**

(37. 29-24 *is interessant* 19x30 38. 34-29 23x34 39. 40x29 20-24 40. 29x20 15x24
 41. 45-40 18-23 42. 31-26 23-29 43. 37-31 2-8 44. 46-41 8-13 45. 33-28
 22x33x44x35 46. 31x22x11 16x7 47. 26x17x8x19 *-5.18 at 18 ply*)

... **21-26 38. 32x21 16x27 39. 34-30**

(39. 29-24 *looks better* 20x29x40 40. 45x34 23-28 41. 37-32 28x37 42. 31x42
-1.74 at 19 ply)

... **23x34 40. 33-28 22x33x42 41. 31x22x13x24 42x31 42. 36x27 20x29 43.**
46-41 2-7 44. 41-37 17-22



Analyse Kingsrow

1. 34-30 {34-30(0/29)* 34-29(0/28)* 31-27(0/31)? 32-27(0/31)? 31-26(0/28)? 32-28(0/26)? 33-29(2/26)? 33-28(2/26)? 35-30(6/26)?}
18-22 {19-24(0/24)* 20-25(0/28)* 17-21(0/30)? 17-22(0/26)? 19-23(0/24)? 18-23(-2/28)? 20-24(-2/25)? 18-22(-2/25)? 16-21(-6/29)?}
2. 30-25 {30-25(-2/24)* 32-27(0/26)? 31-26(0/23)? 33-29(0/23)? 40-34(0/20)? 32-28(0/20)? 31-27(0/18)? 33-28(2/20)? 39-34(2/17)? 30-24(4/18)?}
12-18 {19-23(-2/23)* 12-18(-2/23)* 17-21(-2/19)? 13-18(-4/15)? 20-24(-8/11)? 19-24(-12/7)? 22-28(-18/6)?}
3. 32-27 {40-34(-2/22)* 31-27(-2/21)? 31-26(0/19)? 39-34(0/18)? 32-27(2/17)? 33-29(2/16)? 32-28(2/16)? 35-30(2/16)? 33-28(6/6)?}
7-12 {19-23(2/16)* 7-12(0/23)? 19-24(-4/2)? 17-21(-6/11)? 8-12(-6/1)?}
4. 37-32 {37-32(0/22)* 31-26(2/18)? 40-34(2/15)? 39-34(2/15)? 33-29(2/13)? 38-32(4/12)? 35-30(4/10)? 33-28(10/3)?}
1-7 {1-7(0/19)* 19-23(0/21)* 17-21(0/12)? 22-28(-4/5)?}
5. 31-26 {41-37(0/18)* 31-26(0/8)* 40-34(0/18)? 32-28(4/8)? 35-30(4/2)? 33-29(6/4)? 42-37(6/1)?}
22x31 {22x31(0/7)*}
6. 26x37 {26x37(0/6)* 36x27(2/8)?}
18-22 {16-21(0/4)* 19-23(0/5)* 17-21(0/19)? 18-23(-2/17)? 17-22(-2/14)? 18-22(-2/1)?}
7. 40-34 {36-31(-2/0)*}
13-18 {diepte 19, 5.5 sec, 16-21,-2 19-23,-4 12-18,-4 22-27,-4 13-18,-4 17-21,-6 22-28,-14 20-24,-16 19-24,-28 hv 16-21 37-31 21-26 32-27 26x37 27x18 12x23 42x31 8-12 41-37 13-18}
8. 34-29 {diepte 19, 5.6 sec, 36-31,-4 37-31,-2 45-40,0 44-40,0 32-27,0 34-29,0 33-29,0 34-30,2 32-28,2 33-28,4 35-30,88 hv 36-31 17-21 31-27 22x31 37x17 11x22 45-40 16-21 42-37 22-27 32-28}
9-13 {diepte 19, 4.9 sec, 16-21,0 9-13,-2 19-23,-2 8-13,-2 17-21,-4 22-27,-4 20-24,-8 19-24,-42 18-23,-208 22-28,-312 hv 16-21 45-40 21-26 40-34 9-13 44-40 4-9 49-44 11-16 36-31 7-11}
9. 44-40 {diepte 19, 4.5 sec, 32-27,-2 37-31,-2 45-40,0 39-34,0 44-40,0 35-30,2 32-28,4 29-24,6 29-23,76 36-31,90 33-28,192 hv 32-27 22x31 37x26 4-9 45-40 17-21 26x17 12x21 50-45 7-12 40-34}
16-21 {diepte 19, 4.2 sec, 16-21,0 22-27,0 4-9,-2 17-21,-2 19-23,-4 3-9,-8 22-28,-10 19-24,-36 20-24,-106 18-23,-208 hv 16-21 40-34 21-26 45-40 4-9 32-28 19-23 28x19 14x23 25x14 10x19}
10. 50-44 {diepte 19, 4.3 sec, 50-44,0 40-34,0 37-31,0 49-44,0 39-34,2 35-30,2 32-28,2 32-27,4 29-24,10 29-23,64 36-31,88 33-28,196 hv 50-44 21-26 40-34 4-9 32-27 22x31 36x27 17-22 37-31 26x37 42x31}
11-16 {diepte 19, 4.3 sec, 21-26,0 4-9,0 21-27,-2 11-16,-2 19-23,-4 3-9,-8 22-27,-10 22-28,-18 19-24,-64 20-24,-100 18-23,-304 hv 21-26 40-34 4-9 45-40 11-16 32-28 20-24 29x20 15x24 37-32 10-15}
11. 32-28 {diepte 20, 5.7 sec, 37-31,-2 40-34,0 29-24,0 32-27,0 39-34,0 32-28,0 35-30,2 29-23,40 36-31,90 33-28,192 hv 37-31 21-26 32-27 26x37 42x31 4-9 41-37 17-21 46-41 21x32 37x17}
4-9 {diepte 19, 4.7 sec, 4-9,2 7-11,2 21-26,0 19-23,0 6-11,0 21-27,-14 3-9,-14 19-24,-54 22-27,-104 20-24,-110 18-23,-112 hv 4-9 40-34 21-26 37-31 26x37 41x32 7-11 45-40 16-21 46-41 11-16}
12. 40-34 {diepte 20, 5.0 sec, 40-34,0 37-31,2 36-31,4 29-24,4 37-32,4 39-34,6 38-32,10 28-23,84 29-23,86 35-30,96 hv 40-34 7-11 37-32 21-27 32x21 16x27 41-37 2-7 46-41 19-23 28x19}
6-11 {diepte 20, 5.9 sec, 21-26,2 7-11,0 6-11,0 20-24,-2 19-23,-2 21-27,-6 18-23,-10 19-24,-52 22-27,-102 hv 21-26 45-40 20-24 29x20 15x24 37-32 16-21 41-37 6-11 34-29 10-15}
13. 37-31 {diepte 20, 4.4 sec, 45-40,0 44-40,0 37-31,0 36-31,4 37-32,8 38-32,12 28-23,76 35-30,94 29-23,96 29-24,102 34-30,190 hv 45-40 20-24 29x20 15x24 37-32 21-27 32x21 16x27 41-37 11-16 46-41}
21-26 {diepte 21, 5.5 sec, 21-26,2 19-23,-2 21-27,-10 18-23,-14 20-24,-22 19-24,-32 22-27,-102 hv 21-26 45-40 26x37 41x32 19-23 28x19 14x23 25x14 10x19 32-27 22x31}
14. 41-37 {diepte 20, 4.1 sec, 45-40,2 44-40,2 42-37,6 41-37,6 38-32,8 28-23,86 35-30,92 29-23,96 29-24,98 34-30,192 31-27,198 hv 45-40 26x37 41x32 19-23 28x19 14x23 25x14 10x19 29-24 19x30 34x25}
16-21 {diepte 21, 4.1 sec, 16-21,4 19-23,2 20-24,-6 19-24,-76 22-27,-100 18-23,-190 17-21,-220 hv 16-21 45-40 19-23 28x19 14x23 25x14 10x19 29-24 19x30 34x25 21-27}
15. 37-32 {diepte 20, 4.3 sec, 38-32,0 47-41,6 37-32,8 44-40,10 45-40,12 46-41,52 29-23,94 35-30,96 28-23,100 29-24,100 34-30,198 31-27,210 hv 38-32 11-16 31-27 22x31 36x27 20-24 29x20 15x24 43-38 18-22 27x18}
26x37 {diepte 7, 0.0 sec, 26x37,10 hv 26x37 42x31 21-26 47-42 26x37 42x31 19-23 28x19}

16. 32x41 {diepte 24, 7.5 sec, 42x31,6 32x41,6 hv 42x31 11-16 47-42 19-23 28x19 14x23 25x14 10x19 35-30 21-27 32x21}

21-27 {diepte 21, 6.2 sec, 21-27,12 19-23,4 21-26,4 11-16,2 20-24,0 19-24,-72 22-27,-100 18-23,-290 hv 21-27 42-37 27-32 38x27 22x42 47x38 19-23 28x19 14x23 25x14 10x19}

17. 42-37 {diepte 20, 5.5 sec, 42-37,10 45-40,12 44-40,18 38-32,88 41-37,90 28-23,92 36-31,96 35-30,98 29-24,104 29-23,104 34-30,194 hv 42-37 27-32 38x27 22x42 47x38 19-23 28x19 14x23 25x14 9x20 44-40}

19-23 {diepte 20, 3.9 sec, 27-32,10 18-23,10 19-23,8 20-24,6 11-16,-2 19-24,-70 27-31,-86 17-21,-396 hv 27-32 38x27 22x42 47x38 19-23 28x19 14x23 25x14 10x19 44-40 23-28}

18. 28x19 {diepte 7, 0.0 sec, 28x19,8 hv 28x19 14x23 25x14 9x20 44-40 10-14 29-24 20x29}

14x23 {diepte 23, 4.6 sec, 14x23,6 13x24,-24 hv 14x23 25x14 9x20 35-30 10-14 30-25 14-19 25x14 19x10 38-32 27x38}

19. 25x14 {diepte 7, 0.0 sec, 25x14,2 hv 25x14 10x19 35-30 5-10 30-24 19x30 34x25 23x34 39x30}

10x19 {diepte 23, 5.8 sec, 9x20,8 10x19,2 hv 9x20 35-30 10-14 30-25 14-19 25x14 19x10 38-32 27x38 43x32 10-14}

20. 47-42 {diepte 18, 3.6 sec, 35-30,2 45-40,6 44-40,8 29-24,8 37-32,20 37-31,20 48-42,22 38-32,22 47-42,24 36-31,90 34-30,200 33-28,238 hv 35-30 5-10 47-42 10-14 44-40 14-20 30-24 19x30 34x14 9x20 37-32}

15-20 {diepte 19, 4.2 sec, 15-20,22 5-10,6 11-16,0 23-28,-2 9-14,-4 17-21,-6 27-32,-78 27-31,-80 19-24,-84 22-28,-188 hv 15-20 37-32 5-10 32x21 17x26 36-31 26x37 41x32 12-17 32-27 22x31}



Rob speelt 20. 47-42?

Hier begint het verval.

Langzaam komt Jos steeds iets beter te staan.

Met 20. 35-30 zou er nog een gelijkwaardige stand op het bord staan.

21. 35-30 {diepte 19, 3.5 sec, 37-32,24 35-30,26 45-40,28 44-40,56 37-31,96 29-24,106 34-30,200 33-28,202 38-32,246 36-31,442 hv 37-32 5-10 32x21 17x26 36-31 26x37 41x32 11-17 35-30 20-25 46-41}

20-25 {diepte 19, 3.3 sec, 20-25,28 9-14,4 11-16,-6 17-21,-46 27-32,-68 27-31,-82 20-24,-94 23-28,-116 22-28,-180 19-24,-192 5-10,-410 hv 20-25 44-40 5-10 40-35 9-14 49-44 10-15 37-31 23-28 41-37 19-23}

22. 44-40 {diepte 20, 5.3 sec, 37-32,26 45-40,28 37-31,34 44-40,34 29-24,70 30-24,108 38-32,244 33-28,300 36-31,438 hv 37-32 11-16 32x21 16x27 42-37 9-14 45-40 5-10 38-32 27x38 43x32}

9-14 {diepte 20, 4.6 sec, 9-14,24 5-10,22 11-16,20 17-21,8 27-31,-74 27-32,-86 22-28,-92 23-28,-98 19-24,-200 hv 9-14 40-35 5-10 49-44 11-16 37-31 23-28 41-37 19-23 45-40 10-15}

23. 37-32 {diepte 20, 3.4 sec, 40-35,22 49-44,24 37-31,34 37-32,36 29-24,98 30-24,108 38-32,256 33-28,420 36-31,444 hv 40-35 5-10 49-44 11-16 44-40 16-21 30-24 19x30 35x24 13-19 24x13}

11-16 {diepte 20, 4.2 sec, 11-16,34 5-10,22 17-21,20 3-9,14 14-20,2 27-31,-80 23-28,-92 22-28,-176 19-24,-194 hv 11-16 32x21 16x27 40-35 5-10 42-37 10-15 30-24 19x30 35x24 14-19}

24. 32x21 {diepte 7, 0.0 sec, 32x21,18 hv 32x21 16x27 41-37 17-21 40-35 23-28 30-24}

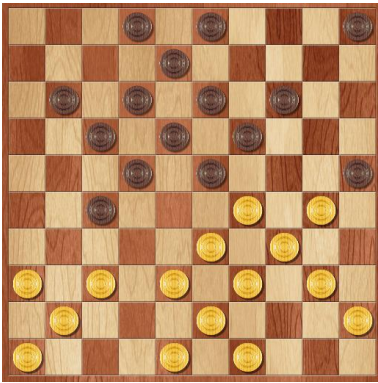
16x27 {diepte 24, 6.1 sec, 16x27,34 17x26,20 hv 16x27 42-37 5-10 40-35 7-11 37-31 10-15 41-37 3-9 46-41 14-20}

25. 42-37 {diepte 20, 5.3 sec, 40-35,36 42-37,36 41-37,42 49-44,52 29-24,102 30-24,114 38-32,256 33-28,418 36-31,456 hv 40-35 5-10 42-37 3-9 45-40 10-15 38-32 27x38 43x32 23-28 32x23}

7-11 {diepte 20, 5.4 sec, 5-10,40 7-11,36 3-9,28 14-20,14 17-21,10 27-32,-62 27-31,-68 23-28,-96 22-28,-174 19-24,-184 hv 5-10 40-35 7-11 37-31 3-9 31-26 10-15 41-37 11-16 37-31 14-20}

26. 37-32 {diepte 19, 3.5 sec, **37-31,26** **37-32,40** 40-35,40 38-32,42 48-42,48 49-44,52 29-24,102 30-24,106 36-31,446 33-28,734 hv 37-31 5-10 41-37 10-15 40-35 14-20 30-24 19x30 35x24 13-19 24x13}

17-21 {diepte 20, 6.0 sec, 5-10,36 11-16,36 2-7,32 17-21,30 3-9,28 14-20,12 27-31,-74 23-28,-90 22-28,-170 19-24,-182 hv 5-10 32x21 17x26 36-31 26x37 41x32 10-15 32-27 22x31 33-28 23x32}



Rob speelt 26. 37-32

Met 37-31 zou een geheel andere stand ontstaan.

Met voor Rob wat eenvoudiger spel.

Jos antwoordt niet met 5-10 waardoor de schade beperkt lijkt te blijven.

Doordat Rob daarna 27. 48-42 speelt in plaats van 41-37 wordt het voordeel voor Jos toch weer groter dan noodzakelijk.

27. 48-42 {diepte 19, 3.5 sec, **41-37,30** 40-35,36 **48-42,40** 29-24,50 49-44,84 32-28,98 30-24,98 36-31,146 33-28,562 hv 41-37 11-16 40-35 21-26 32x21 16x27 46-41 5-10 45-40 10-15 30-24}

11-16 {diepte 20, 6.4 sec, 12-17,46 11-16,44 3-9,44 5-10,38 21-26,36 11-17,28 2-7,26 23-28,26 14-20,-8 22-28,-168 27-31,-178 19-24,-560 hv 12-17 42-37 8-12 37-31 11-16 31-26 5-10 41-37 27-31 36x27 22x42}

28. 42-37 {diepte 21, 5.0 sec, 42-37,44 30-24,98 32-28,98 49-44,100 41-37,110 40-35,112 36-31,374 29-24,498 33-28,906 hv 42-37 12-17 37-31 8-12 31-26 5-10 40-35 23-28 32x23 19x28 30-24}

12-17 {diepte 20, 4.4 sec, 12-17,44 21-26,28 23-28,28 22-28,-174 5-10,-258 3-9,-260 2-7,-260 14-20,-268 27-31,-366 19-24,-384 hv 12-17 40-35 5-10 37-31 8-12 31-26 23-28 32x23 19x28 30-24 27-32}

29. 40-35 {diepte 21, 3.5 sec, 40-35,38 37-31,38 29-24,54 49-44,58 30-24,106 32-28,138 36-31,590 33-28,880 hv 40-35 5-10 37-31 8-12 31-26 3-8 30-24 19x30 35x24 14-19 45-40}

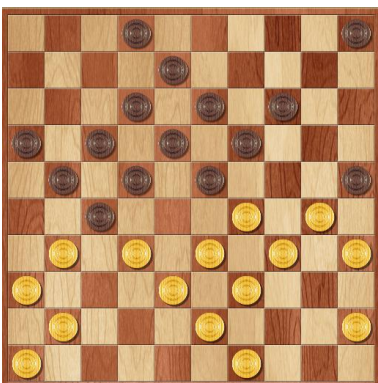
8-12 {diepte 21, 5.2 sec, 5-10,38 2-7,36 3-9,32 8-12,30 21-26,-72 27-31,-90 14-20,-94 22-28,-202 19-24,-224 23-28,-272 hv 5-10 37-31 8-12 31-26 3-8 45-40 10-15 30-24 19x30 35x24 15-20}

30. 37-31 {diepte 21, 4.7 sec, 30-24,54 37-31,60 45-40,68 49-44,82 29-24,112 32-28,138 33-28,334 36-31,498 hv 30-24 19x30 35x24 14-19 45-40 19x30 40-35 3-8 35x24 13-19 24x13}

3-8 {diepte 21, 5.1 sec, 21-26,50 5-10,42 3-8,42 3-9,38 2-8,38 23-28,30 2-7,12 14-20,-88 19-24,-230 22-28,-284 hv 21-26 32x21 26x37 41x32 16x27 32x21 17x26 46-41 2-8 38-32 23-28}

31. 30-24 {diepte 22, 5.1 sec, **31-26,36** **30-24,54** 33-28,62 41-37,64 49-44,66 45-40,68 32-28,112 29-24,264 hv 31-26 5-10 45-40 10-15 30-24 19x30 35x24 15-20 24x15 25-30 34x25}

19x30 {diepte 7, 0.0 sec, 19x30,40 hv 19x30 35x24 14-19 45-40 19x30 40-35 21-26 32x21}



Rob speelt 31. 30-24 en komt weer iets slechter te staan.

Met 31-26 zou de schade beperkt blijven.

32. 35x24 {diepte 7, 0.0 sec, 35x24,36 hv 35x24 14-19 34-30 25x34 29x40 19x30 33-29 23x34}

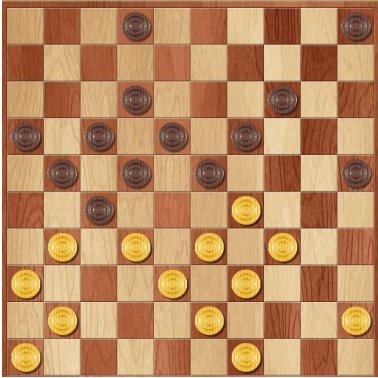
13-19 {diepte 21, 5.2 sec, 14-19,52 13-19,46 23-28,8 14-20,-74 25-30,-82 5-10,-94 2-7,-198 21-26,-224 22-28,-304 hv 14-19 45-40 19x30 40-35 13-19 35x13 8x19 41-37 21-26 32x21 16x27}

33. 24x13 {diepte 7, 0.0 sec, 24x13,-2 hv 24x13 8x19 31-26 14-20 41-37 27-31 36x27 22x42}

8x19 {diepte 23, 3.7 sec, 8x19,50 18x9,-200 hv 8x19 31-26 5-10 41-37 27-31 36x27 22x42 38x47 21-27 32x21 16x27}

34. 49-44 {diepte 20, 4.2 sec, 31-26,44 49-44,64 41-37,68 34-30,90 32-28,114 29-24,138 45-40,298 33-28,368 hv 31-26 5-10 41-37 27-31 36x27 22x42 38x47 21-27 32x21 16x27 46-41}

5-10 {diepte 19, 3.5 sec, 21-26,64 5-10,54 23-28,22 14-20,18 19-24,1 2-7,1 2-8,-56 25-30,-62 22-28,-530 hv 21-26 32x21 26x37 41x32 16x27 32x21 17x26 46-41 12-17 41-37 5-10}



Rob speelt 34. 49-44

Jos speelt nu eens niet zijn beste zet maar houdt toch veel voordeel.

Hier wordt het verlies van de partij voor Rob ingeluid.

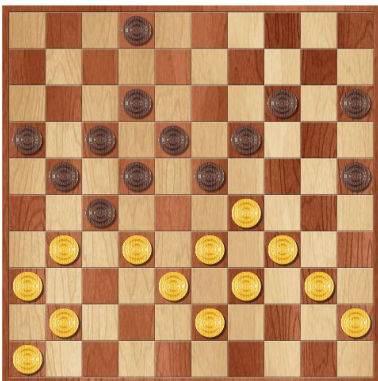
Nog eens had hij hier de kans om 31-26 te spelen.

35. 44-40 {diepte 19, 3.3 sec, 44-40,52 41-37,54 31-26,74 34-30,84 45-40,108 32-28,126 29-24,136 33-28,138 hv 44-40 10-15 40-35 21-26 32x21 26x37 41x32 16x27 32x21 17x26 46-41}

10-15 {diepte 19, 3.3 sec, 10-15,84 21-26,80 23-28,26 25-30,-78 2-8,-124 19-24,-262 2-7,-276 14-20,-476 22-28,-548 hv 10-15 40-35 21-26 32x21 26x37 41x32 16x27 32x21 17x26 46-41 14-20}

36. 41-37 {diepte 20, 3.6 sec, 31-26,72 40-35,84 29-24,90 41-37,100 32-28,132 34-30,252 33-28,372 hv 31-26 14-20 40-35 2-7 41-37 27-31 36x27 22x42 38x47 21-27 32x21}

14-20 {diepte 18, 5.3 sec, 14-20,90 23-28,72 21-26,46 2-8,1 15-20,1 25-30,-80 2-7,-202 19-24,-542 22-28,-558 hv 14-20 31-26 27-31 36x27 22x42 38x47 21-27 32x21 16x27 40-35 17-22}



Rob speelt 36. 41-37

Zijn nadeel wordt groter dan noodzakelijk.

Jos antwoordt met de best mogelijke zet.

37. 40-35 {diepte 20, 4.1 sec, 31-26,102 40-35,124 29-24,140 33-28,206 32-28,230 46-41,242 34-30,286 hv 31-26 27-31 36x27 22x42 38x47 21-27 32x21 16x27 46-41 2-8 47-42}

21-26 {diepte 19, 3.3 sec, 21-26,126 20-24,84 19-24,-110 2-8,-236 2-7,-252 23-28,-366 25-30,-370 22-28,-646 hv 21-26 32x21 16x27 29-24 20x40 45x34 23-28 37-32 28x37 31x42 18-23}

38. 32x21 {diepte 7, 0.0 sec, 32x21,58 hv 32x21 16x27 46-41 23-28 35-30 20-24}

16x27 {diepte 7, 0.0 sec, 16x27,50 hv 16x27 34-30 25x34 29x40 20-24 39-34}

39. 34-30 {diepte 20, 5.0 sec, **29-24,130** 35-30,256 45-40,264 **34-30,278** 33-28,344 46-41,516 37-32,536 38-32,862 hv 29-24 20x40 45x34 23-28 37-32 28x37 31x42 18-23 33-29 2-7 29x18}
 23x34 {diepte 24, 5.5 sec, 23x34,388 25x34,96 hv 23x34 30-24 20x29 33x13 18x9 39x30 25x34 38-33 27-32 37x28 26x37}



Rob speelt 39. 34-30

Hij staat er al slecht voor.

Met 29-24 zou de schade iets minder zijn.

Met daarna 40. 33-28 in plaats van 30-24 wordt het probleem nog groter.

Jos buit het maximaal uit.

Vanuit het diagram is de beste voortzetting:

39. 29-24 20x40 40. 45x34 23-28 41. 37-32 28x37 42. 31x42 19-23 43. 33-29 27-31
 44. 36x27 22x31 45. 46-41 31-36 46. 41-37 2-7 47. 39-33 7-11 48. 34-30 23x34
 49. 30x39 18-23 50. 39-34 15-20 51. 38-32 26-31 52. 37x26 36-41 53. 42-37 41-47
 54. 33-28 23-29 55. 34x23 47-38 56. 23-18 38x9 met ook dan winst voor Jos.

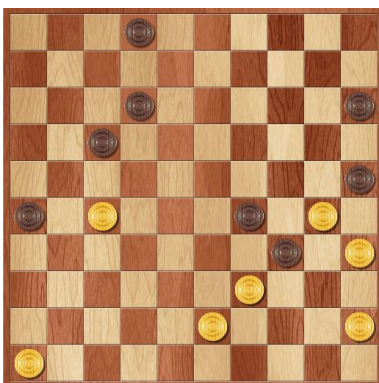
40. 33-28 {diepte 21, 3.3 sec, **30-24,326** **33-28,374** 33-29,466 45-40,522 46-41,640 37-32,662 38-32,766 hv 30-24 19x30 35x24 20x29 33x24 18-23 39x30 25x34 24-19 23x14 38-33}
 22x42 {diepte 22, 6.2 sec, 22x42,520 22x44,-80 hv 22x42 31x24 42x31 36x27 20x29 30-24 29x20 39x30 25x34 43-38 20-24}

41. 31x24 {diepte 7, 0.0 sec, 31x24,102 hv 31x24 42x31 36x27 20x29 46-41 12-18 27-21 17-22 21-16}
 42x31 {diepte 24, 5.1 sec, 42x31,648 20x29,294 hv 42x31 36x27 20x29 30-24 29x20 39x30 25x34 43-38 20-24 38-33 2-7}

42. 36x27 {diepte 7, 0.0 sec, 36x27,122 hv 36x27 20x29 46-41 12-18 27-21 17-22 41-37 26x17}
 20x29 {diepte 7, 0.0 sec, 20x29,132 hv 20x29 46-41 12-18 27-21 17-22 21-16 26-31}

43. 46-41 {diepte 20, 5.2 sec, 46-41,466 30-24,522 27-21,680 45-40,1110 27-22,2506 39-33,2564 43-38,3984 hv 46-41 2-7 27-21 26-31 21-16 12-18 30-24 29x20 39x30 25x34 43-38}

2-7 {diepte 16, 3.6 sec, **17-22,2482** 12-18,386 **2-7,376** 26-31,230 17-21,220 2-8,196 15-20,84 29-33,-174 34-40,-290 hv 17-22 27x7 2x11 41-37 26-31 37x26 11-17 30-24 29x20 39x30 25x34}



Rob speelt 43. 46-41.

Dragon Dammen geeft 30-24 ook aan als mogelijke zet.

Ook dan verliest Rob en wel door:

43. 30-24 29x20 44. 39x30 25x34 45. 43-38 17-22 46. 27x7 2x11 47. 38-33 20-24
 48. 33-28 11-17 49. 28-23 17-22

Jos kan hier het snelst winnen door 17-22.

Met het gespeelde 2-7 kan Rob nog tegenspartelen door 27-21 te spelen.

44. 41-37 {diepte 19, 3.8 sec, **27-21,484** 30-24,546 27-22,1008 45-40,1048 39-33,2480 **41-37,2504** 41-36,2584 43-38,3984 hv 27-21 17-22 30-24 29x20 39x30 25x34 21-16 26-31 45-40 34x45 41-36}
 17-22 {diepte 18, 4.9 sec, 17-22,2522 12-18,414 7-11,406 17-21,272 26-31,244 15-20,3 29-33,-176 34-40,-376 hv 17-22 27x18 12x23 30-24 29x20 39x30 25x34 37-32 26-31 43-38 20-24}
 {diepte 7, 0.0 sec, 27x18,246 hv 27x18 12x23 30-24 29x20 39x30 25x34 43-38 23-29 37-32}