

Wit: **Wim van Kasteren**
 Zwart: **Cor Stehouwer**
 Resultaat: **1-1**
 Datum: **10-11-2016**
 Toernooi: **Onderlinge competitie**
 Plek: **De Huif**
 Ronde:

1. 32-28 17-22 2. 28x17 12x21 3. 37-32 7-12 4. 32-28 1-7 5. 41-37 19-23 6. 28x19 14x23 7. 47-41 21-26 8. 33-29 10-14 9. 31-27 11-17 10. 37-31 26x37 11. 42x31 14-19 12. 38-32 20-24 13. 29x20 15x24 14. 31-26

(14. 48-42 looks better 5-10 15. 43-38 5-10 16. 41-37 5-10 17. 41-37 -0.10 at 11 ply)

... **5-10 15. 34-30 10-14 16. 36-31 4-10 17. 41-36 7-11 18. 48-42 2-7 19. 42-38 17-21 20. 26x17 12x21 21. 30-25**

(21. 46-41 is better 7-12 22. 39-33 7-12 23. 39-33 7-12 24. 39-33 -0.18 at 13 ply)

... **21-26 22. 27-21 26x37x28 23. 38-33 16x27 24. 33x22x31 7-12 25. 40-34 10-15 26. 43-38 24-30 27. 35x24 19x30 28. 46-41 30-35**

(13-19 may be better 29. 41-37 16-21 30. 41-37 16-21 31. 41-37 16-21 -1.36 at 10 ply)

29. 39-33 11-17 30. 41-37 17-22 31. 44-39

(31. 34-29 may be better 23x34 32. 34-29 23-28 33. 34-29 28x39 34. 44x33 -1.10 at 9 ply)

... **14-19 32. 37-32 9-14 33. 32-27 22-28 -1.10 at 9 ply**

(12-17 may be better 34. 31-26 22x31 35. 31-26 15-20 36. 31-26 15-20 -1.20 at 8 ply)

34. 33x22 23-29 35. 34x23 19x28x17 36. 38-32

(36. 39-33 may be better 15-20 37. 39-33 15-20 38. 39-33 15-20 39. 39-33 -1.16 at 8 ply)

... **14-19 37. 50-44 3-9 38. 39-34 9-14 39. 34-29 19-23 40. 31-26 23x34 41. 44-40 35x44 42. 49x40x29 15-20 43. 27-21 13-19 44. 21-16 17-22**

(6-11 may be better 45. 16x7 12x1 46. 16x7 1x12 47. 16x7 12x1 48. 16x7 1x12 49. 16x7 12x1 50. 16x7 1x12 51. 16x7 12x1 52. 16x7 1x12 53. 16x7 12x1 54. 16x7 1x12 -3.72 at 12 ply)

45. 45-40 6-11 46. 16x7 12x1 47. 40-34

(47. 40-35 ! 19-24 48. 35-30 19-24 49. 30x19x10 19-24 50. 25x14 24x33 51. 35-30 -0.99 at 12 ply)

... **19-24 48. 32-28 22x33 49. 29x38 24-30**

(18-23 is interessant 50. 38-32 18-23 51. 26-21 18-23 52. 38-32 18-23 53. 36-31 18-23 54. 38-33 18-23 55. 36-31 18-23 56. 38-33 18-23 57. 38-32 8-12 58. 36-31 18-23 59. 26-21 18-23 -2.83 at 15 ply)

50. 34-29 30-35 51. 38-33 8-13 52. 33-28 13-19 53. 36-31

(53. 26-21 is better 35-40 54. 31-27 35-40 55. 31-27 35-40 56. 31-27 35-40 57. 31-27 35-40 58. 31-27 35-40 59. 31-27 35-40 60. 31-27 35-40 61. 31-27 35-40 62. 31-27 35-40 63. 31-27 35-40 -0.18 at 18 ply)

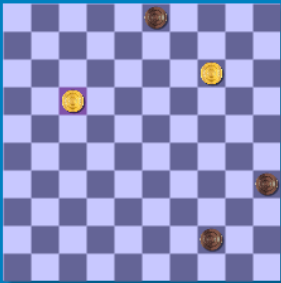
1-7

(35-40 ! 54. 31-27 35-40 55. 31-27 35-40 56. 31-27 35-40 57. 31-27 35-40 58. 31-27 35-40 59. 31-27 35-40 60. 31-27 35-40 61. 31-27 35-40 62. 31-27 35-40 63. 31-27 35-40 -3.16 at 12 ply)

54. 31-27 7-12

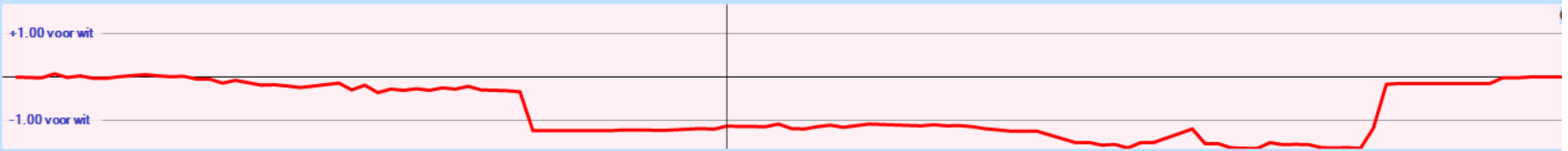
(35-40 !! 55. 28-22 35-40 56. 22x13x24x15 35-40 57. 28-22 35-40 58. 28-22 35-40 59. 28-22 35-40 60. 28-22 35-40 61. 28-22 35-40 62. 28-22 35-40 63. 28-22 35-40 64. 28-22 35-40 -0.79 at 16 ply)

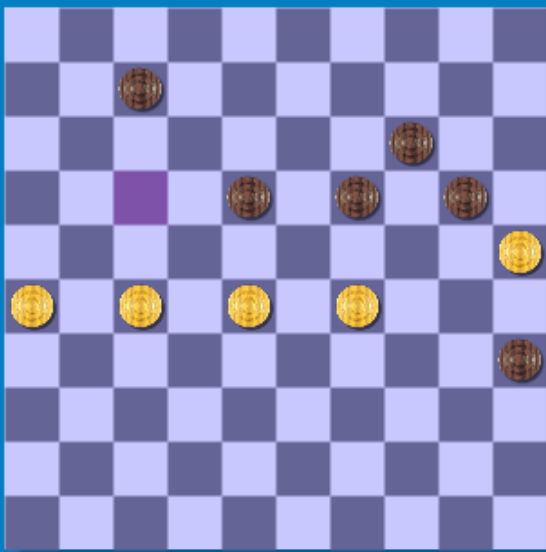
55. 28-22 19-23 56. 22x13 23x34 57. 13-9 14x3 58. 25x14 34-39 59. 27-22 39-44 60. 22-17 12x21 61. 26x17 0.00 at 16 ply



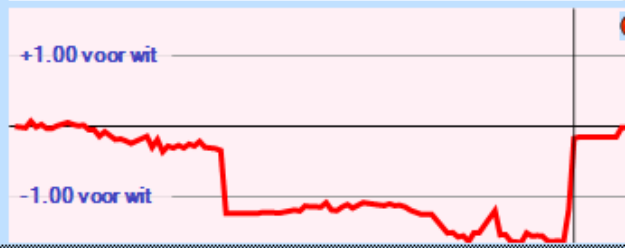
+1.00 voor wit

-1.00 voor wit





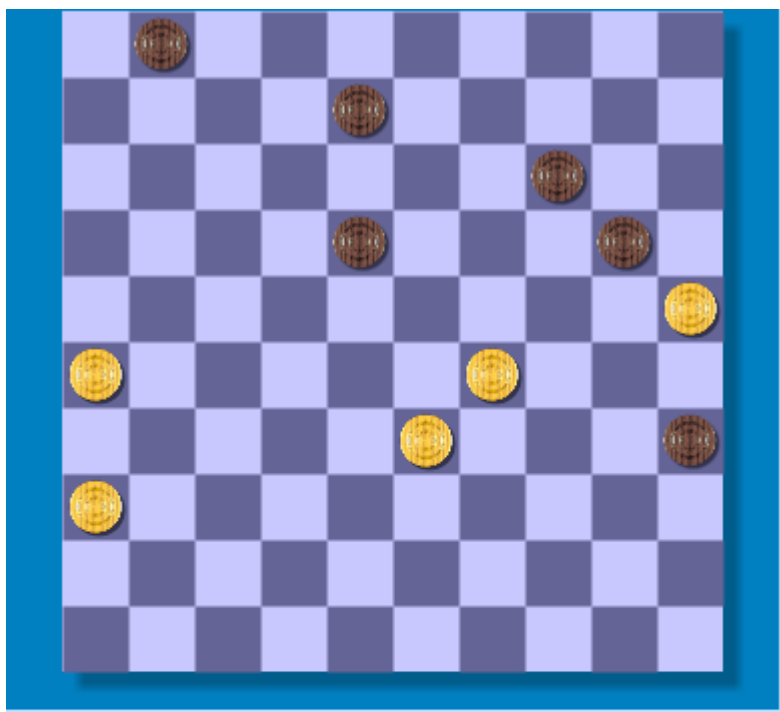
54. 31-27 7-12
 (35-40 !! 55. 28-22 35-40 56. 22x13x24x15
 35-40 57. 28-22 35-40 58. 28-22 35-40 59. 28-22
 35-40 60. 28-22 35-40 61. 28-22 35-40 62. 28-22
 35-40 63. 28-22 35-40 64. 28-22 35-40
 -0.79 at 16 ply)
 55. 28-22 19-23 56. 22x13 23x34 57. 13-9
 14x3 58. 25x14 34-39 59. 27-22 39-44 60.
 22-17 12x21 61. 26x17 0.00 at 16 ply



Analyse huidige stelling

zet	diepte	Score	Zet van tegenstander
18-22	8	1.176	28x17 35-40 17-12 7x16
35-40	8	1.112	28-22 19-23 22x13 23x34
18-23	8	0.312	29x18 35-40 28-23 19x28
7-12	8	0.128	28-22 19-23 22x13 23x34
7-11	7	0.040	28-22 18-23 29x18
20-24	6	-1.112	29x20x9 35-40 9-3
19-23	6	-1.112	28x19x10 35-40 25x14
19-24	6	-1.224	28-23 24x33 23x12x1

Na 51^e zet wit: 38-33



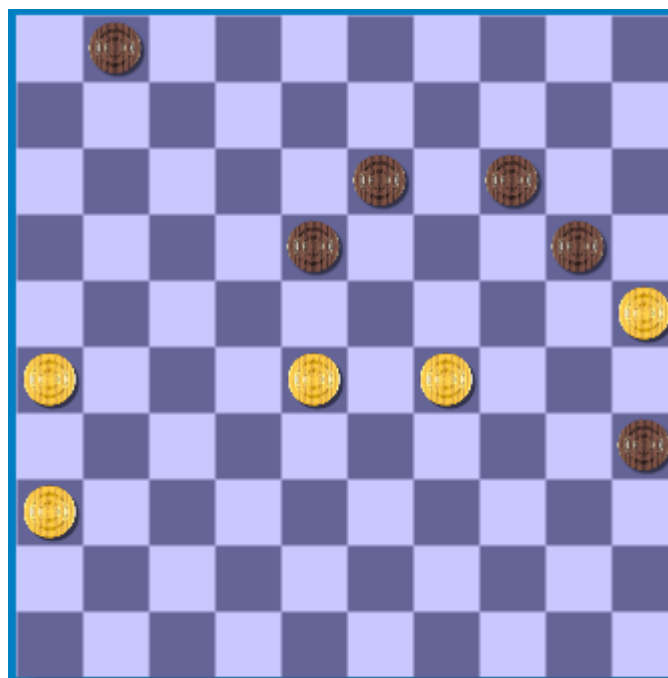
Analyse huidige stelling

zet	diepte	Score	Zet van tegenstander
35-40	8	3.544	33-28 40-44 36-31 8-13
8-12	7	3.200	33-28 35-40 26-21
18-23	8	2.288	29x18 35-40 26-21 40-44
8-13	7	2.152	33-28 35-40 28-23
18-22	7	1.552	29-23 8-13 23-18
1-6	7	1.072	33-28 8-13 26-21
1-7	7	0.912	33-28 8-13 26-21
20-24	6	-1.688	29x20x9 35-40 9-3
14-19	5	-5.312	25x14x23x12x3 35-40

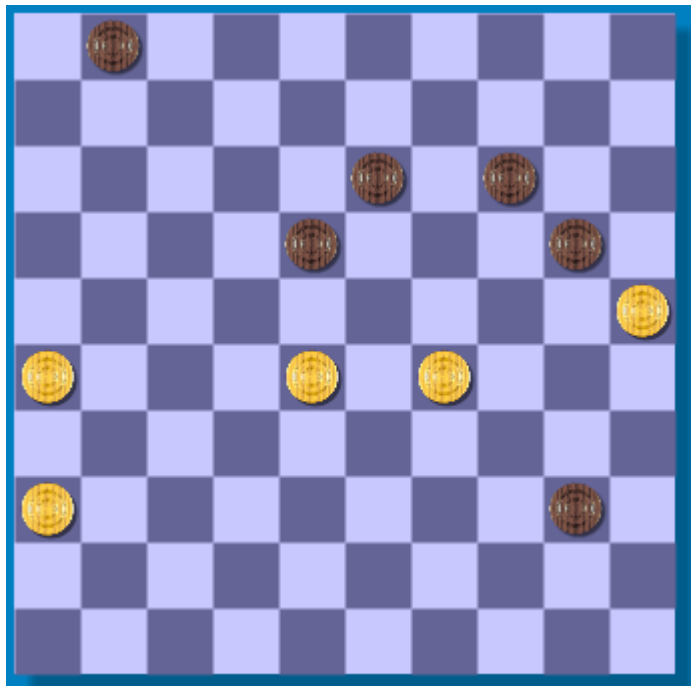
Na 52^e 33-28 is de winst nog steeds mogelijk via 35-40 en

53. 28-23 40-45 54. 23x12 45-50 55.

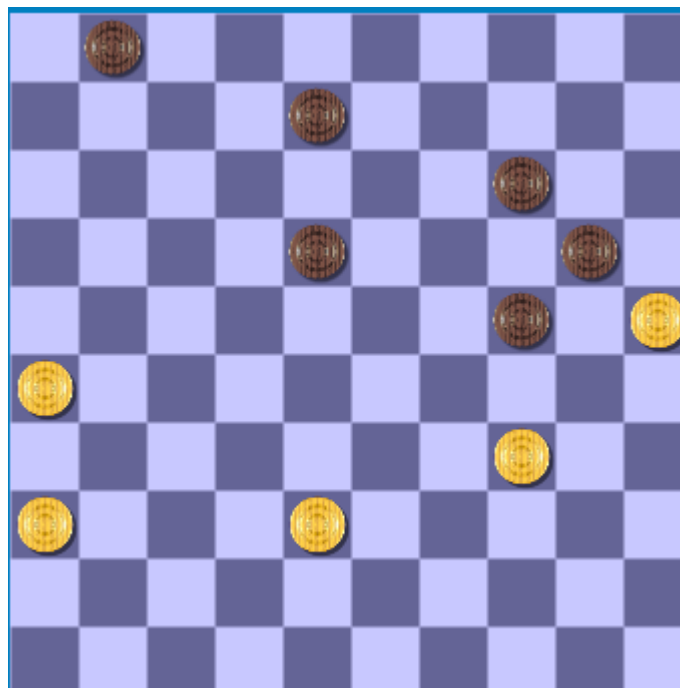
29-23 50-45 56. 23-18 13x22 57. 12-8 Daarna: 14-19!



De door Cor ingezette meerslag (52^e zet 35-40 i.p.v. 13-19) zou ook remise geven: na 28-23 20-24 29x9 (a 13x4 23x12) (b 18x29 9x18) is winst niet meer mogelijk!



Op de 49^e zet was 18-23 en daarna 24-30 nog veel sterker dan meteen 24-30!



Op de 20^e zet had ik inderdaad 46-41 moeten spelen!

Alhoewel jouw opening ook dan veel beter was dan de mijne.

