

## Wim van Kasteren – Gerard Baltussen, 14 november 2013

1. 32-28 18-23 2. 38-32 12-18 3. 42-38 7-12 4. 47-42 1-7 5. 31-27 17-21 6. 36-31 20-24 7. 41-36 15-20 8. 27-22 18x27 9. 31x22 21-26 10. 34-29 23x34 11. 40x29 10-15 12. 45-40 5-10 13. 40-34 12-18 14. 37-31 26x37 15. 42x31 18x27 16. 32x21 16x27 17. 31x22 8-12 18. 46-41 2-8 19. 41-37 12-18 20. 37-31 18x27 21. 31x22 8-12 22. 48-42 11-16 23. 42-37 7-11 24. 37-31 11-17 25. 22x11 16x7 26. 31-27 7-11 27. 27-21 13-18 28. 21-16 9-13 29. 16x7 12x1 30. 34-30 3-8 31. 30-25 4-9 32. 38-32 8-12 33. 32-27 1-7 34. 28-22 7-11 35. 36-31 12-17

( 11-16 is interessant 36. 31-26 16-21 37. 26x17x8 13x2 38. 22x13x4 16-21 39. 27x16 .18 at 17 ply )

36. 31-26 17x28 37. 33x22 24x33 38. 39x28 20-24 39. 26-21 15-20 .20 at 16 ply

( 24-29 !! 40. 43-38 18-23 41. 43-38 23x32x43 42. 49x38 18-23 43. 43-38 18-23 44. 43-38 18-23 45. 43-38 18-23 46. 43-38 18-23 47. 43-38 18-23 48. 43-38 18-23 49. 43-38 18-23 18-23 -0.78 at 15 ply )

40. 44-39 10-15 41. 50-44 24-29

( 11-16 !! 42. 43-38 18-23 43. 43-38 23x32x43x34 44. 43-38 18-23 45. 43-38 18-23 46. 43-38 18-23 47. 43-38 18-23 48. 43-38 18-23 49. 43-38 18-23 50. 43-38 18-23 51. 43-38 18-23 -0.74 at 17 ply ) 42.

35-30

( 42. 21-16 !! 29-33 43. 16x7 29-33 44. 21-16 29-33 45. 21-16 29-33 46. 21-16 29-33 47. 21-16 29-33 48. 21-16 29-33 49. 21-16 29-33 50. 21-16 29-33 51. 21-16 29-33 52. 21-16 .20 at 12 ply )

... 29-33 43. 39-34

( 43. 21-16 !! 33x44x35x24 44. 16x7 33x44x35x24 45. 49-44 33x44x35x24 46. 49-44 33x44x35x24 47. 49-44 33x44x35x24 48. 49-44 33x44x35x24 49. 49-44 33x44x35x24 50. 49-44 33x44x35x24 51. 49-44 33x44x35x24 52. 49-44 33x44x35x24 53. 49-44 .72 at 15 ply ) 20-24 ? .10 at 16 ply

( 18-23 !! 44. 28x39 18-23 45. 28x39 18-23 46. 28x39 18-23 47. 28x39 18-23 48. 28x39 18-23 49. 28x39 18-23 50. 28x39 18-23 51. 28x39 18-23 52. 28x39 18-23 53. 28x39 18-23 -1.47 at 15 ply )

44. 28x39 24x35 45. 34-29

( 45. 43-38 looks better 35x44x33 46. 38x29 35x44x33 47. 29x38 35x44x33 48. 38x29 35x44x33 49. 29x38 35x44x33 50. 38x29 35x44x33 51. 29x38 35x44x33 52. 38x29 35x44x33 53. 29x38 35x44x33 54. 38x29 35x44x33 55. 29x38 .22 at 14 ply )

... 11-17 46. 21x12x23 19x28x17 47. 43-38 6-11 48. 29-24

( 48. 38-32 may be better 13-18 49. 29-24 13-18 50. 29-24 13-18 51. 29-24 draw at 12 ply )

... 13-18 49. 38-33 18-23

( 11-16 looks better 50. 33-28 11-16 51. 33-28 11-16 52. 33-28 11-16 53. 33-28 draw at 15 ply )

50. 27-22 17x28 51. 33x22 9-13 52. 39-34 14-19 53. 34-30 11-16 54. 49-43

( 54. 44-40 may be better 35x44 55. 49x40 16-21 56. 22-17 21x12 57. 22-17 12x21 58. 25-20 16-21 .17 at 16 ply )

... 16-21 55. 43-38 23-28 .27 at 19 ply

( 21-26 looks better 56. 24x13 35x24 57. 24x13 18x27 58. 24x13 18x27 59. 24x13 18x27 60. 24x13 18x27 61. 24x13 18x27 62. 24x13 18x27 63. 24x13 18x27 64. 24x13 18x27 65. 24x13 18x27 .11 at 18 ply )

56. 22x33 21-26 57. 33-28 26-31 58. 28-22 31-37

( 31-36 is better 59. 24x13 35x24 60. 24x13 18x27 61. 24x13 18x27 62. 24x13 18x27 63. 24x13 18x27 64. 24x13 18x27 65. 24x13 18x27 66. 24x13 18x27 67. 24x13 18x27 68. 24x13 18x27 draw at 16 ply )

59. 22-18 13x22 60. 24x13 35x24 61. 38-32 37x28 62. 13-9 22-27 63. 9-4 27-32 64. 25-20 0.00 at 12 ply

+1.00 voor wit

-1.00 voor wit

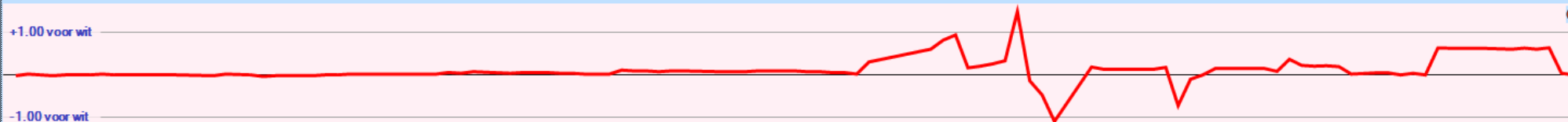


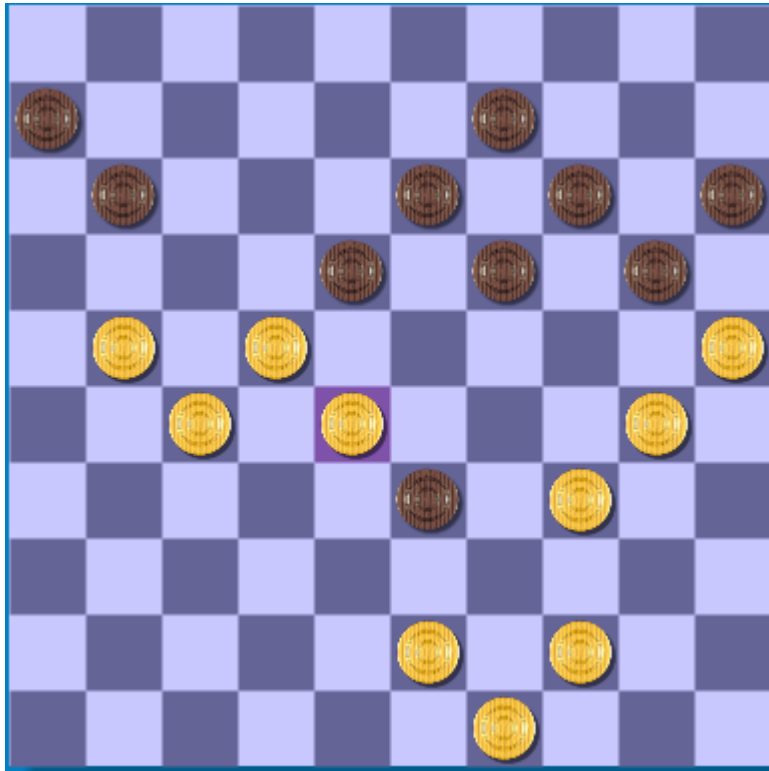


Diagram links:

( 24-29 !! 40. 43-38 18-23 41. 43-38 23x32x43 42. 49x38 18-23 43. 43-38 18-23 44. 43-38 18-23 45. 43-38 18-23 46. 43-38 18-23 47. 43-38 18-23 48. 43-38 18-23 49. 43-38 18-23 -0.78 at 15 ply )

Diagram rechts:

40. 44-39 10-15 41. 50-44 24-29  
 ( 11-16 !! 42. 43-38 18-23 43. 43-38 23x32x43x34 44. 43-38 18-23 45. 43-38 18-23 46. 43-38 18-23 47. 43-38 18-23 48. 43-38 18-23 49. 43-38 18-23 50. 43-38 18-23 51. 43-38 18-23 -0.74 at 17 ply ) 42. 35-30



... 29-33 43. 39-34

( 43. 21-16 !! 33x44x35x24 44. 16x7 33x44x35x24 45. 49-44 33x44x35x24 46. 49-44 33x44x35x24 47. 49-44 33x44x35x24 48. 49-44 33x44x35x24 49. 49-44 33x44x35x24 50. 49-44 33x44x35x24 51. 49-44 33x44x35x24 52. 49-44 33x44x35x24 53. 49-44 .72 at 15 ply ) 20-24 ? .10 at 16 ply

( 18-23 !! 44. 28x39 18-23 45. 28x39 18-23 46. 28x39 18-23 47. 28x39 18-23 48. 28x39 18-23 49. 28x39 18-23 50. 28x39 18-23 51. 28x39 18-23 52. 28x39 18-23 53. 28x39 18-23 -1.47 at 15 ply )