

Wim van Kasteren – Willem-Peter Berkelmans onderlinge competitie 17 april 2025

Analyse Dragon Dammen

1. 32-28 20-25 2. 37-32 14-20 3. 41-37 10-14 4. 34-30 25x34 5. 39x30 20-25 6. 44-39 25x34 7. 39x30 17-22 8. 28x17 12x21 9. 31-26 7-12 10. 26x17 12x21 11. 50-44 1-7 12. 44-39 7-12 13. 32-28 5-10 14. 46-41 19-23 15. 28x19 14x23 16. 30-25 11-17 17. 40-34 6-11 18. 33-29 10-14 19. 34-30 23x34 20. 39-33 13-19 21. 30x39 8-13 22. 33-29 2-8 23. 29-24 19x30 24. 25x34 14-19 25. 34-30 18-23 26. 37-32 13-18 27. 41-37 9-13 28. 39-34 4-9 29. 30-25 15-20 30. 25x14 9x20 31. 49-44 21-27 32. 32x21 16x27 33. 44-40 20-25 34. 43-39 3-9 35. 48-43 23-28 36. 34-30 25x34 37. 39x30 18-23

(18-22 looks better 38. 30-24 19x30 39. 35x24 13-18 40. 40-34 8-13 -0.21 at 18 ply)

38. 30-24 19x30 39. 35x24 12-18 40. 43-39 17-22 41. 40-35 11-17 42. 45-40 8-12 43. 40-34 9-14 44. 34-30

(44. 38-32 may be better 27x38 45. 42x33 17-21 46. 35-30 21-27 47. 30-25 -0.06 at 18 ply)

... 13-19 45. 24x13 18x9 46. 30-24 9-13 47. 35-30 12-18 48. 39-34 13-19 49. 24x13 18x9 50. 30-24

(50. 38-32 ! 27x38 51. 42x33 28x39 52. 34x43 22-27 53. 30-24 23-28 54. 47-42 28-33 55.

37-31 17-22 56. 42-37 9-13 57. 43-38 33x42 58. 37x48 27-32 draw at 23 ply)

... 9-13 51. 34-30 13-18

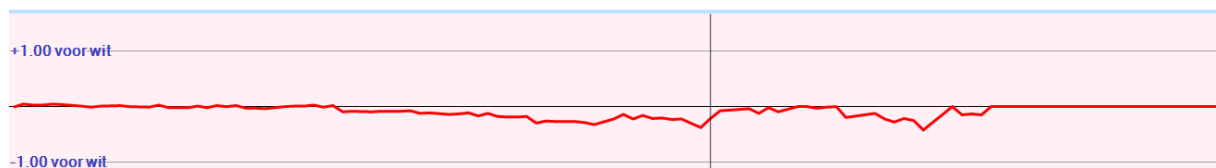
(14-19 is interessant 52. 36-31 27x36 53. 24-20 13-18 54. 38-32 17-21 55. 20-15 21-26 56.

42-38 26-31 57. 37x26 28x37 58. 15-10 37-41 59. 10-5 22-28 draw at 22 ply)

52. 30-25 14-19 53. 24x13 18x9 54. 25-20 17-21 55. 38-33 28x39 56. 37-32 27x38 57.

42x33x44 23-29 58. 44-39 21-27 59. 47-42 27-32 60. 36-31 22-28 61. 31-26 29-33

62. 39-34 32-38 63. 34-29 33x24x15 64. 42x33x22 0.00 at 44 ply



Analyse Kingsrow

1. 32-28 {34-29(0/28)* 34-30(0/29)* 31-27(0/31)? 32-27(0/31)? 31-26(0/28)? 32-28(0/26)? 33-29(2/26)? 33-28(2/26)? 35-30(6/26)?}

20-25 {17-22(0/28)* 17-21(0/25)* 20-25(0/25)? 18-23(0/25)? 19-23(0/24)? 16-21(-2/27)? 18-22(-2/27)? 19-24(-2/24)? 20-24(-2/24)?}

2. 37-32 {34-30(0/27)* 37-32(0/24)* 33-29(2/24)? 34-29(2/19)? 31-27(2/19)? 38-32(2/18)? 31-26(2/18)? 28-22(4/19)?}

14-20 {17-21(0/23)* 17-22(0/19)? 15-20(-2/19)? 19-23(-2/18)? 18-23(-2/16)? 14-20(-2/15)? 19-24(-4/15)? 18-22(-6/15)? 16-21(-8/13)?}

3. 41-37 {34-30(-2/14)* 31-27(0/20)? 33-29(0/20)? 41-37(0/17)? 31-26(0/17)? 34-29(2/17)? 42-37(2/16)? 32-27(4/13)?}

10-14 {17-21(0/16)* 10-14(-2/17)? 17-22(-2/17)? 20-24(-2/14)? 18-23(-4/8)? 9-14(-6/7)? 19-24(-8/6)? 16-21(-10/7)? 18-22(-14/1)? 19-23(-16/3)?}

4. 34-30 {34-30(-2/16)* 31-27(0/18)? 46-41(0/15)? 31-26(0/15)? 47-41(2/14)? 28-23(2/14)? 34-29(2/12)? 33-29(4/13)? 28-22(4/10)? 35-30(10/11)?}

25x34 {25x34(-2/15)*}

5. 39x30 {39x30(-2/14)* 40x29(2/14)?}
 20-25 {17-22(-2/13)* 17-21(-2/10)* 20-25(-2/10)? 20-24(-4/9)? 5-10(-4/9)? 4-10(-6/9)? 16-21(-6/2)?}
6. 44-39 {44-39(-2/9)* 30-24(0/16)? 46-41(0/15)? 31-27(2/12)? 31-26(2/11)? 47-41(4/9)?}
 25x34 {25x34(-2/8)*}
7. 39x30 {40x29(-2/7)* 39x30(0/9)?}
 17-22 {15-20(0/8)* 5-10(0/8)*}
8. 28x17 {diepte 7, 0.0 sec, 28x17,0 hv 28x17 11x22 30-25 5-10 40-34 15-20 50-44}
 12x21 {diepte 19, 3.8 sec, 12x21,0 11x22,-2 hv 12x21 30-25 7-12 31-26 1-7 26x17 12x21 46-41 21-26 35-30 16-21}
9. 31-26 {diepte 17, 5.4 sec, 30-25,0 50-44,0 43-39,0 31-26,0 46-41,0 49-44,2 40-34,2 47-41,4 32-28,4 33-28,4 33-29,4 31-27,6 30-24,24 32-27,100 hv 30-25 21-26 35-30 15-20 46-41 7-12 43-39 1-7 30-24 20x29 33x24}
 7-12 {diepte 17, 5.2 sec, 18-23,0 7-12,0 5-10,-2 15-20,-2 19-23,-4 14-20,-4 4-10,-6 21-27,-6 11-17,-20 19-24,-100 8-12,-100 18-22,-204 hv 18-23 26x17 11x22 33-28 22x33 38x18 13x22 37-31 5-10 50-44 7-12}
10. 26x17 {diepte 7, 0.0 sec, 26x17,0 hv 26x17 11x22 37-31 15-20 30-25 5-10 50-44}
 12x21 {diepte 20, 6.2 sec, 12x21,0 11x22,-2 hv 12x21 30-25 21-26 35-30 16-21 30-24 19x30 25x34 21-27 32x21 26x17}
11. 50-44 {diepte 17, 5.2 sec, 30-25,0 50-44,0 36-31,0 46-41,0 43-39,0 30-24,0 40-34,2 49-44,2 47-41,2 37-31,2 32-28,2 33-29,4 33-28,4 32-27,100 hv 30-25 21-26 35-30 16-21 32-28 1-7 46-41 18-22 28x17 21x12 50-44}
 1-7 {diepte 17, 4.6 sec, 21-26,0 15-20,0 1-7,0 11-17,-2 5-10,-2 8-12,-2 14-20,-2 21-27,-2 4-10,-4 2-7,-4 18-22,-4 19-23,-4 18-23,-6 19-24,-102 hv 21-26 30-25 16-21 35-30 21-27 32x21 26x17 30-24 19x30 25x34 1-7}
12. 44-39 {diepte 17, 3.8 sec, 30-25,0 36-31,0 46-41,0 44-39,0 40-34,0 43-39,2 33-29,2 47-41,2 33-28,2 32-28,2 37-31,4 30-24,8 32-27,100 hv 30-25 21-26 35-30 15-20 36-31 7-12 30-24 20x29 33x24 19x30 25x34}
 7-12 {diepte 17, 3.7 sec, 7-12,0 5-10,0 15-20,0 21-26,0 11-17,-2 4-10,-2 8-12,-2 14-20,-2 19-23,-2 18-23,-4 18-22,-4 21-27,-16 19-24,-100 hv 7-12 30-25 21-26 35-30 16-21 46-41 15-20 36-31 5-10 30-24 20x29}
13. 32-28 {diepte 17, 3.4 sec, 30-25,0 36-31,0 46-41,0 40-34,0 47-41,2 37-31,2 32-28,2 33-28,2 33-29,2 39-34,2 49-44,2 30-24,2 32-27,100 hv 30-25 21-26 35-30 16-21 36-31 15-20 30-24 20x29 33x24 19x30 25x34}
 5-10 {diepte 17, 3.6 sec, 5-10,2 21-26,0 15-20,0 4-10,0 18-23,0 14-20,0 11-17,0 2-7,0 12-17,-2 21-27,-66 19-23,-96 19-24,-98 18-22,-200 hv 5-10 46-41 21-26 30-25 12-17 40-34 17-22 28x17 11x22 34-30 6-11}
14. 46-41 {diepte 17, 3.8 sec, 46-41,0 30-25,2 47-41,2 37-32,2 30-24,4 38-32,6 37-31,10 28-23,88 28-22,92 40-34,94 36-31,98 39-34,98 49-44,98 33-29,206 hv 46-41 15-20 30-25 21-26 40-34 10-15 34-29 18-22 28x17 11x22 45-40}
 19-23 {diepte 18, 4.8 sec, 15-20,0 21-26,0 14-20,0 11-17,0 12-17,0 19-24,0 19-23,0 2-7,0 18-23,-4 21-27,-76 18-22,-200 hv 15-20 30-25 21-26 40-34 10-15 34-29 12-17 37-32 16-21 45-40 17-22}
15. 28x19 {diepte 7, 0.0 sec, 28x19,-2 hv 28x19 14x23 30-25 10-14 33-29 23x34 40x29 21-26}
 14x23 {diepte 19, 3.4 sec, 14x23,0 13x24,-4 hv 14x23 37-31 10-14 41-37 11-17 30-25 17-22 47-41 21-26 31-27 22x31}

- 16.** 30-25 {diepte 17, 4.3 sec, 37-31,0 37-32,0 30-25,2 40-34,2 49-44,2 39-34,2 33-28,2 38-32,4 30-24,76 36-31,84 33-29,198 hv 37-31 21-26 41-37 16-21 30-25 11-16 47-41 9-14 31-27 21x32 37x19}
 11-17 {diepte 17, 3.6 sec, 21-26,0 11-17,0 10-14,0 12-17,-2 2-7,-2 9-14,-2 13-19,-4 21-27,-6 23-28,-10 18-22,-88 23-29,-92 15-20,-286 hv 21-26 37-32 11-17 41-37 17-22 33-29 23x34 40x29 6-11 39-33 16-21}
- 17.** 40-34 {diepte 17, 3.5 sec, 35-30,0 37-32,0 39-34,0 40-34,0 33-29,0 36-31,0 37-31,2 49-44,2 33-28,4 38-32,4 25-20,94 hv 35-30 6-11 33-29 23x34 40x29 10-14 38-33 17-22 37-32 14-20 25x14}
 6-11 {diepte 17, 3.4 sec, 10-14,2 17-22,2 21-26,0 6-11,-2 21-27,-2 18-22,-2 9-14,-4 2-7,-6 13-19,-6 23-28,-92 23-29,-92 15-20,-286 hv 10-14 34-30 6-11 33-28 23x32 37x28 21-27 41-37 17-21 37-32 21-26}
- 18.** 33-29 {diepte 17, 4.2 sec, 37-31,0 33-28,0 34-29,0 34-30,0 37-32,2 45-40,4 35-30,4 33-29,4 38-32,6 49-44,6 36-31,86 25-20,96 hv 37-31 21-27 31x22 17x28 33x22 18x27 39-33 12-18 41-37 10-14 34-29}
 10-14 {diepte 17, 3.6 sec, 17-22,4 10-14,4 21-26,4 13-19,2 2-7,2 9-14,0 21-27,0 23-28,-20 15-20,-282 18-22,-390 hv 17-22 39-33 11-17 34-30 23x34 30x39 21-26 35-30 10-14 37-32 17-21}
- 19.** 34-30 {diepte 17, 3.5 sec, 39-33,4 34-30,8 37-31,8 36-31,10 35-30,10 45-40,10 38-33,10 37-32,12 38-32,12 49-44,16 29-24,94 25-20,212 hv 39-33 17-22 34-30 23x34 30x39 11-17 37-32 21-26 45-40 17-21 40-34}
 23x34 {diepte 7, 0.0 sec, 23x34,8 hv 23x34 39-33 17-22 30x39 21-26 37-32 16-21}
- 20.** 39-33 {diepte 19, 5.9 sec, 39-33,4 36-31,86 30-24,86 37-32,88 37-31,88 38-33,92 38-32,92 49-44,94 25-20,282 45-40,384 hv 39-33 34-39 43x34 17-22 34-29 11-17 37-32 21-26 41-37 17-21 49-43}
 13-19 {diepte 18, 4.9 sec, 34-39,4 17-22,2 21-26,2 13-19,2 14-20,2 14-19,2 4-10,2 18-22,0 15-20,0 2-7,0 34-40,0 21-27,0 18-23,0 hv 34-39 43x34 17-22 37-32 14-20 25x14 9x20 41-37 20-25 32-28 11-17}
- 21.** 30x39 {diepte 7, 0.0 sec, 30x39,4 hv 30x39 17-22 35-30 19-23 36-31 21-26 45-40}
 8-13 {diepte 17, 4.8 sec, 17-22,4 21-26,2 8-13,2 9-13,0 19-24,0 18-22,0 21-27,0 4-10,0 15-20,-2 19-23,-2 2-7,-2 18-23,-2 14-20,-188 hv 17-22 45-40 11-17 40-34 9-13 34-29 4-9 37-32 21-27 32x21 17x26}
- 22.** 33-29 {diepte 17, 3.8 sec, 45-40,2 33-28,2 36-31,2 35-30,4 37-32,4 37-31,4 49-44,4 39-34,6 33-29,6 38-32,94 25-20,98 hv 45-40 17-22 40-34 11-17 37-32 19-23 41-37 14-20 25x14 9x20 37-31}
 2-8 {diepte 17, 5.2 sec, 21-26,6 17-22,6 19-23,6 21-27,4 2-8,4 19-24,4 18-22,4 2-7,2 15-20,2 4-10,0 3-8,0 14-20,-184 18-23,-316 hv 21-26 39-33 17-21 45-40 19-23 40-34 14-20 25x14 9x20 38-32 13-19}
- 23.** 29-24 {diepte 18, 5.8 sec, 39-33,2 37-32,4 45-40,6 29-24,6 35-30,6 49-44,6 38-33,8 36-31,8 39-34,8 38-32,10 37-31,12 29-23,106 25-20,206 hv 39-33 21-26 37-32 17-21 35-30 4-10 30-24 19x30 25x34 14-19 41-37}
 19x30 {diepte 7, 0.0 sec, 19x30,2 hv 19x30 25x34 17-22 37-31 21-26 31-27 22x31 36x27}
- 24.** 25x34 {diepte 20, 4.2 sec, 25x34,6 35x24,58 hv 25x34 17-22 37-32 11-17 41-37 14-19 37-31 21-27 32x21 17x37 42x31}
 14-19 {diepte 17, 3.9 sec, 14-19,6 13-19,6 15-20,6 21-26,6 17-22,4 14-20,4 18-22,4 4-10,4 18-23,2 21-27,0 hv 14-19 37-32 21-27 32x21 17x26 41-37 9-14 39-33 12-17 35-30 4-9}
- 25.** 34-30 {diepte 17, 4.1 sec, 37-32,6 37-31,6 39-33,8 45-40,8 38-33,8 34-30,8 35-30,8 49-44,8 36-31,8 34-29,10 38-32,10 hv 37-32 17-22 41-37 11-17 37-31 21-27 32x21 17x37 42x31 9-14 38-32}
 18-23 {diepte 17, 3.5 sec, 17-22,8 4-10,8 9-14,8 21-26,6 15-20,6 19-23,6 18-22,4 21-27,2 18-23,2 19-24,-2 hv 17-22 45-40 11-17 40-34 9-14 30-25 21-26 34-30 17-21 38-32 22-27}

26. 37-32 {diepte 17, 4.0 sec, 36-31,2 45-40,6 37-31,6 30-25,6 39-33,8 37-32,10 38-32,10 38-33,10 49-44,12 39-34,14 30-24,16 hv 36-31 21-26 31-27 12-18 45-40 15-20 40-34 17-22 41-36 22x31 36x27}

13-18 {diepte 17, 3.3 sec, 13-18,10 9-14,8 21-27,8 15-20,8 21-26,6 17-22,6 4-10,4 12-18,2 23-29,-16 23-28,-98 19-24,-188 hv 13-18 41-37 8-13 37-31 15-20 32-27 21x32 38x27 17-21 42-38 21x32}

27. 41-37 {diepte 17, 3.6 sec, 41-37,10 32-27,10 39-33,12 42-37,12 45-40,12 30-25,12 38-33,14 49-44,18 39-34,20 32-28,50 30-24,88 36-31,174 hv 41-37 8-13 37-31 9-14 32-27 21x32 38x27 15-20 42-38 17-21 47-42}

9-13 {diepte 18, 6.0 sec, 15-20,10 8-13,10 9-14,8 17-22,8 9-13,6 21-27,4 4-10,4 18-22,4 21-26,2 23-29,-16 23-28,-104 19-24,-190 hv 15-20 37-31 8-13 32-27 21x32 38x27 17-21 42-38 21x32 38x27 11-17}

28. 39-34 {diepte 18, 5.3 sec, 30-25,6 45-40,6 37-31,6 39-33,8 49-44,10 36-31,10 47-41,12 38-33,14 39-34,18 30-24,92 32-27,274 32-28,282 hv 30-25 17-22 45-40 4-9 40-34 9-14 34-29 23x34 39x30 19-23 38-33}

4-9 {diepte 18, 4.3 sec, 15-20,14 21-26,12 4-9,10 21-27,8 17-22,8 3-9,8 4-10,8 18-22,6 23-29,-180 23-28,-186 19-24,-190 hv 15-20 43-39 21-27 32x21 16x27 39-33 20-24 33-29 24x33 38x29 17-22}



Wim speelt 28. 39-34 wat niet de sterkste zet is.

Het heeft echter weinig gevolgen.

De ruil 15-20 25x14 9x20 die Kingsrow in petto heeft, volgt ook in de partij.

29. 30-25 {diepte 18, 5.9 sec, 30-25,10 43-39,12 38-33,14 49-44,14 45-40,18 36-31,18 37-31,20 47-41,22 30-24,112 34-29,194 32-27,282 32-28,284 hv 30-25 17-22 34-29 23x34 32-28 22x33 38x40 11-17 35-30 19-23 43-38}

15-20 {diepte 19, 4.6 sec, 15-20,12 21-26,10 17-22,10 21-27,8 9-14,8 19-24,-10 18-22,-44 23-29,-182 23-28,-186 hv 15-20 25x14 9x20 49-44 20-24 44-40 17-22 37-31 21-27 32x21 16x27}

30. 25x14 {diepte 7, 0.0 sec, 25x14,4 hv 25x14 19x10 35-30 17-22 37-31 21-27 32x21 16x27}

9x20 {diepte 20, 4.5 sec, 9x20,12 19x10,6 hv 9x20 38-33 17-22 43-38 21-27 32x21 16x27 49-44 11-17 44-40 17-21}

31. 49-44 {diepte 18, 4.1 sec, 49-44,12 38-33,12 43-39,12 37-31,14 34-30,14 36-31,16 45-40,16 47-41,18 35-30,30 34-29,80 32-27,280 32-28,280 hv 49-44 3-9 44-39 21-27 32x21 16x27 39-33 9-14 34-30 17-22 43-39}

21-27 {diepte 19, 5.4 sec, 3-9,14 17-22,10 21-27,8 18-22,6 21-26,4 20-24,4 19-24,4 20-25,4 23-29,-312 23-28,-320 hv 3-9 44-39 17-22 39-33 12-17 34-29 23x34 33-28 22x33 38x40 17-22}

32. 32x21 {diepte 7, 0.0 sec, 32x21,8 hv 32x21 16x27 37-32 20-24 32x21 17x26 44-39 12-17}

16x27 {diepte 21, 5.2 sec, 16x27,10 17x26,6 hv 16x27 44-40 3-9 34-29 23x34 40x29 19-23 29-24 20x29 43-39 17-22}

33. 44-40 {diepte 18, 5.5 sec, 44-40,10 37-32,10 44-39,12 38-33,14 37-31,16 34-30,16 45-40,16 43-39,20 47-41,20 36-31,90 34-29,92 35-30,104 38-32,432 hv 44-40 3-9 34-29 23x34 40x29 19-23 29-24 20x29 43-39 29-34 39x30}

20-25 {diepte 19, 5.5 sec, 3-9,10 17-22,8 18-22,6 17-21,6 20-25,4 11-16,4 19-24,2 20-24,-2 27-32,-84 27-31,-84 23-28,-200 23-29,-288 hv 3-9 34-29 23x34 40x29 19-23 29-24 20x29 43-39 18-22 38-32 27x38}

34. 43-39 {diepte 19, 5.1 sec, 37-32,6 34-29,10 47-41,10 43-39,12 37-31,16 35-30,16 36-31,74 34-30,108 38-33,250 38-32,476 hv 37-32 3-9 32x21 17x26 34-29 23x34 40x29 9-14 45-40 11-16 29-24}

3-9 {diepte 19, 5.4 sec, 3-9,14 17-21,8 17-22,6 23-28,6 11-16,4 18-22,4 19-24,0 27-32,-90 27-31,-90 25-30,-96 23-29,-312 hv 3-9 37-32 9-14 32x21 17x26 48-43 12-17 42-37 11-16 34-30 25x34}

35. 48-43 {diepte 19, 4.5 sec, 37-32,12 39-33,14 48-43,16 37-31,20 35-30,20 38-33,22 47-41,24 38-32,68 36-31,74 34-29,536 34-30,558 hv 37-32 9-14 32x21 17x26 48-43 11-17 42-37 17-22 34-29 23x34 39x30}

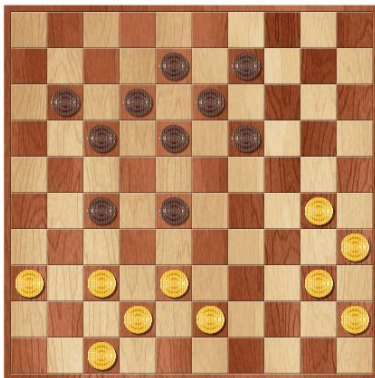
23-28 {diepte 19, 6.0 sec, 23-28,24 17-22,12 9-14,8 11-16,8 17-21,8 25-30,-84 27-31,-90 27-32,-92 19-24,-172 18-22,-358 23-29,-596 hv 23-28 34-30 25x34 39x30 19-24 30x19 13x24 40-34 18-22 45-40 11-16}

36. 34-30 {diepte 18, 4.0 sec, 37-31,26 34-29,26 34-30,28 47-41,42 36-31,72 35-30,118 38-33,182 39-33,282 37-32,436 38-32,544 hv 37-31 17-22 34-30 25x34 40x29 12-17 29-24 19x30 35x24 9-14 38-33}

25x34 {diepte 7, 0.0 sec, 25x34,10 hv 25x34 39x30 17-22 43-39 12-17 38-32 27x38 42x33}

37. 39x30 {diepte 21, 3.7 sec, 39x30,18 40x29,112 hv 39x30 17-22 30-24 19x30 35x24 12-17 40-35 9-14 45-40 17-21 37-31}

18-23 {diepte 18, 4.9 sec, **17-22,22** 9-14,20 19-24,18 18-22,14 11-16,12 17-21,10 **18-23,6** 19-23,0 28-32,-70 27-32,-84 28-33,-90 27-31,-92 hv 17-22 30-24 19x30 35x24 12-17 37-31 9-14 40-35 18-23 42-37 8-12}



Willem-Peter speelt 37. ... 18-23

Hij verliest een stuk van zijn toch al kleine voordeel.

Veel maakt het niet uit.

De applicaties zijn het niet met elkaar eens.

Kingsrow zou spelen: 37. ... 17-22 38. 30-24 19x30 39. 35x24 11-17

40. 36-31 27x36 41. 47-41 36x47 42. 38-32 47x19 43. 32x3 22-28

44. 45-40 18-22 45. 37-31 13-18 46. 3-14 18-23 47. 14-9 12-18

48. 31-27 22x31 49. 9x33 17-21 50. 40-35 8-13 51. 35-30 13-19

52. 30-25 21-27 53. 25-20 27-32 54. 20-15 31-37 55. 15-10 37-41

56. 10-4 41-46 57. 4-15 32-37 58. 33-47 23-28 59. 15-29 28-32 60. 29-34 19-24 61. 47x20 37-41

62. 20-25 41-47 met remise.

Dragon Dammen zou spelen: 37.... 19-24 38. 30x19 13x24 39. 40-34 18-22 40. 45-40 8-13

41. 43-39 28-32 42. 37x28 22x44 43. 40x49 12-18 44. 38-33 18-23 45. 42-38 9-14 46. 47-42 13-18

47. 49-43 11-16 48. 33-29 24x33 49. 38x29 17-22 50. 35-30 16-21 51. 30-25 27-32 52. 43-39 21-26

53. 42-38 32x43 54. 39x48 26-31 55. 36x27 22x31 56. 29-24 14-19 57. 24x22 31-36 58. 22-17 36-41

59. 25-20 41-47 60. 34-29 47x15 61. 48-42 15x47 62. 17-12 23-29 63. 12-8 29-33 64. 8-3 47-41 met

remise.

38. 30-24 {diepte 18, 3.7 sec, 30-24,2 40-34,22 37-31,26 30-25,26 47-41,34 36-31,64 43-39,404 37-32,446 38-32,512 38-33,532 hv 30-24 19x30 35x24 12-18 40-34 17-22 45-40 9-14 43-39 8-12 34-30}
 19x30 {diepte 7, 0.0 sec, 19x30,2 hv 19x30 35x24 9-14 43-39 12-18 40-34 8-12 45-40}

39. 35x24 {diepte 7, 0.0 sec, 35x24,2 hv 35x24 9-14 43-39 12-18 40-34 8-12 45-40}
 12-18 {diepte 18, 4.8 sec, 9-14,8 17-22,6 12-18,6 13-18,-12 11-16,-14 17-21,-24 27-32,-104 27-31,-106 28-32,-246 23-29,-272 28-33,-562 13-19,-672 hv 9-14 40-35 12-18 43-39 17-22 35-30 8-12 45-40 11-16 40-34 12-17}

40. 43-39 {diepte 18, 3.6 sec, 43-39,6 40-34,12 37-31,28 47-41,32 24-20,42 40-35,48 36-31,72 24-19,162 37-32,428 38-32,526 38-33,606 hv 43-39 17-22 40-35 9-14 45-40 11-16 35-30 8-12 30-25 13-19 24x13}
 17-22 {diepte 18, 5.1 sec, 17-22,8 8-12,-12 18-22,-18 17-21,-26 11-16,-88 27-31,-122 27-32,-162 28-32,-224 28-33,-266 23-29,-276 13-19,-360 9-14,-684 hv 17-22 40-35 11-16 35-30 8-12 45-40 9-14 40-34 12-17 38-32 27x38}

41. 40-35 {diepte 19, 5.2 sec, 40-35,3 40-34,4 24-20,14 39-34,18 47-41,22 37-31,30 39-33,36 38-33,42 36-31,82 24-19,158 38-32,242 37-32,652 hv 40-35 9-14 45-40 11-16 37-31 8-12 38-32 28x26 36-31 26x48 24-19}
 11-17 {diepte 19, 3.8 sec, 9-14,3 11-16,3 11-17,1 8-12,-2 23-29,-72 27-31,-112 27-32,-188 13-19,-596 28-33,-746 28-32,-760 hv 9-14 45-40 11-16 37-31 8-12 38-32 28x26 36-31 26x48 24-19 48x45}

42. 45-40 {diepte 18, 4.7 sec, 39-34,0 45-40,3 37-31,20 39-33,30 24-20,34 36-31,84 35-30,90 38-33,104 47-41,128 24-19,170 38-32,332 37-32,676 hv 39-34 9-14 37-32 28x48 38-32 48x19 32x3 23-28 3x20 22-27 47-42}
 8-12 {diepte 19, 4.8 sec, 8-12,3 9-14,1 17-21,-14 23-29,-82 27-31,-106 27-32,-210 28-32,-296 28-33,-320 13-19,-764 hv 8-12 24-20 9-14 20x9 13x4 38-32 27x38 42x33 4-10 40-34 10-15}

43. 40-34 {diepte 19, 3.9 sec, 24-20,0 35-30,3 40-34,3 37-31,8 39-34,22 47-41,22 39-33,32 36-31,78 38-33,90 24-19,180 38-32,236 37-32,616 hv 24-20 9-14 20x9 13x4 38-32 27x38 42x33 4-9 40-34 9-14 33-29}
 9-14 {diepte 20, 4.4 sec, 9-14,3 17-21,-4 27-31,-122 27-32,-266 23-29,-272 28-32,-324 13-19,-340 28-33,-454 hv 9-14 35-30 13-19 24x13 18x9 30-24 9-13 38-33 12-18 24-20 14x25}

44. 34-30 {diepte 19, 3.9 sec, 38-32,1 35-30,3 38-33,3 34-30,4 47-41,20 36-31,98 24-19,166 24-20,170 39-33,546 37-32,756 37-31,884 34-29,2584 hv 38-32 27x38 42x33 17-21 35-30 13-19 24x13 18x9 33-29 12-18 29-24}
 13-19 {diepte 20, 3.5 sec, 13-19,12 23-29,-24 14-19,-106 27-31,-294 14-20,-334 27-32,-414 17-21,-630 28-32,-818 28-33,-914 hv 13-19 24x13 18x9 30-24 9-13 35-30 12-18 39-34 17-21 38-32 27x38}

45. 24x13 {diepte 7, 0.0 sec, 24x13,8 hv 24x13 18x9 30-24 12-18 35-30 9-13 38-32 27x38}
 18x9 {diepte 7, 0.0 sec, 18x9,10 hv 18x9 39-34 9-13 30-25 13-19 38-32 27x38 42x33}

46. 30-24 {diepte 19, 5.3 sec, 30-24,1 30-25,18 39-34,40 37-31,70 39-33,76 36-31,144 47-41,192 38-33,324 38-32,376 37-32,956 hv 30-24 9-13 35-30 12-18 39-34 17-21 30-25 13-19 24x13 18x9 34-30}
 9-13 {diepte 18, 5.0 sec, 9-13,2 12-18,1 17-21,-26 23-29,-70 14-20,-184 28-32,-710 28-33,-2454 27-32,-2560 27-31,-2634 14-19,-2690 hv 9-13 35-30 14-19 39-33 28x39 38-32 27x38 42x44 13-18 24x13 18x9}

- 47.** 35-30 {diepte 19, 3.6 sec, 35-30,1 37-31,26 39-34,50 39-33,62 47-41,64 36-31,166 38-33,210 24-20,288 24-19,332 38-32,378 37-32,882 hv 35-30 12-18 39-34 13-19 24x13 18x9 38-32 27x38 42x33 28x39 34x43}
 12-18 {diepte 19, 4.9 sec, 12-18,1 14-19,1 17-21,1 13-18,1 23-29,-68 13-19,-286 14-20,-302 28-33,-320 28-32,-948 27-32,-2718 27-31,-3982 hv 12-18 39-34 17-21 38-32 27x38 42x33 28x39 34x43 13-19 24x13 18x9}
- 48.** 39-34 {diepte 20, 4.6 sec, 39-34,1 37-31,3 30-25,22 47-41,74 39-33,78 36-31,160 38-33,302 38-32,452 24-19,716 37-32,1284 24-20,3988 hv 39-34 17-21 38-32 27x38 42x33 28x39 34x43 23-28 47-42 21-26 42-38}
 13-19 {diepte 20, 9.5 sec, 17-21,1 13-19,1 28-33,-3 14-19,-128 27-31,-222 27-32,-290 14-20,-304 28-32,-2616 23-29,-3988 hv 17-21 30-25 13-19 24x13 18x9 34-30 23-29 38-32 27x38 42x24 28-33}
- 49.** 24x13 {diepte 7, 0.0 sec, 24x13,20 hv 24x13 18x9 38-32 27x38 42x33 28x39 34x43 23-29 47-42} 18x9 {diepte 7, 0.0 sec, 18x9,30 hv 18x9 38-32 27x38 42x33 28x39 34x43 23-29 37-31 17-21}
- 50.** 30-24 {diepte 19, 4.5 sec, 30-24,1 38-32,1 47-41,50 37-31,76 38-33,84 30-25,160 36-31,234 34-29,2482 37-32,2520 hv 30-24 9-13 34-30 14-19 38-33 28x39 37-32 27x38 42x44 13-18 24x13} 9-13 {diepte 19, 4.3 sec, 9-13,1 17-21,-3 14-20,-472 28-33,-2466 27-31,-2564 27-32,-2566 23-29,-2624 28-32,-3978 14-19,-3988 hv 9-13 34-30 14-19 38-33 28x39 37-32 27x38 42x44 13-18 24x13 18x9}
- 51.** 34-30 {diepte 17, 4.0 sec, 34-30,1 37-31,20 47-41,136 36-31,260 34-29,602 24-19,604 24-20,622 38-33,2570 37-32,2622 38-32,2630 hv 34-30 14-19 38-33 28x39 37-32 27x38 42x44 13-18 24x13 18x9}
 13-18 {diepte 18, 4.2 sec, 13-18,1 14-19,1 17-21,-3 23-29,-3 14-20,-506 13-19,-2470 28-32,-2680 27-32,-2686 28-33,-2690 27-31,-3984 hv 13-18 30-25 14-19 24x13 18x9 38-33 28x39 37-32 27x38 42x44}
- 52.** 30-25 {diepte 18, 5.4 sec, 30-25,1 38-33,1 36-31,3 37-31,228 24-19,304 47-41,632 38-32,2552 24-20,2624 37-32,2728 hv 30-25 14-19 24x13 18x9 38-33 28x39 37-32 27x38 42x44} 14-19 {diepte 19, 3.5 sec, 14-19,1 23-29,-3 28-33,-3 17-21,-140 27-31,-188 14-20,-358 27-32,-486 28-32,-2824 hv 14-19 24x13 18x9 38-33 28x39 37-32 27x38 42x44}
- 53.** 24x13 {diepte 7, 0.0 sec, 24x13,1 hv 24x13 18x9 38-33 28x39 37-32 27x38 42x44} 18x9 {diepte 7, 0.0 sec, 18x9,1 hv 18x9 38-33 28x39 37-32 27x38 42x44}
- 54.** 25-20 {diepte 18, 4.8 sec, 38-33,1 25-20,1 37-31,756 47-41,2468 36-31,2518 38-32,2610 37-32,2644 hv 38-33 28x39 37-32 27x38 42x44} 17-21 {diepte 17, 4.2 sec, 17-21,1 23-29,-108 9-13,-2492 28-33,-2580 27-32,-2586 28-32,-2600 27-31,-2630 9-14,-2676 hv 17-21 38-33 28x39 37-32 27x38 42x44}
- 55.** 38-33 {diepte 18, 5.6 sec, 38-33,1 37-31,634 20-15,2498 36-31,2590 47-41,2604 38-32,2644 20-14,2646 37-32,3980 hv 38-33 28x39 37-32 27x38 42x44} 28x39 {diepte 7, 0.0 sec, 28x39,1 hv 28x39 37-32 27x38 42x44}
- 56.** 37-32 {diepte 17, 3.5 sec, 37-32,1 20-15,2518 42-38,2562 47-41,2600 36-31,2602 37-31,2616 20-14,2706 hv 37-32 27x38 42x44} 27x38 {diepte 7, 0.0 sec, 27x38,1 hv 27x38 42x44}
- 57.** 42x44 {diepte 7, 0.0 sec, 42x44,1 hv 42x44} 23-29 {diepte 17, 3.4 sec, 21-27,1 22-28,1 23-29,1 21-26,1 22-27,1 23-28,1 9-13,-2592 9-14,-3984 hv 21-27}
- 58.** 44-39 {diepte 24, 5.5 sec, 36-31,1 44-40,1 47-42,1 44-39,1 47-41,2572 20-15,2586 20-14,3978 hv 36-31} 21-27 {diepte 28, 3.4 sec, 21-27,1 22-28,1 9-13,1 21-26,1 22-27,1 29-34,-3 9-14,-2706 29-33,-3990 hv 21-27}

59. 47-42 {diepte 24, 3.9 sec, 47-42,1 47-41,2584 20-15,2586 20-14,3980 36-31,3982 39-34,3984 39-33,3990 hv 47-42}

27-32 {diepte 28, 3.6 sec, 22-28,1 27-32,1 9-13,1 29-34,-3 29-33,-3984 9-14,-3986 27-31,-3994 hv 22-28}

60. 36-31 {diepte 25, 3.7 sec, 36-31,1 20-15,2602 39-34,3984 42-37,3984 20-14,3986 42-38,3988 39-33,3990 hv 36-31}

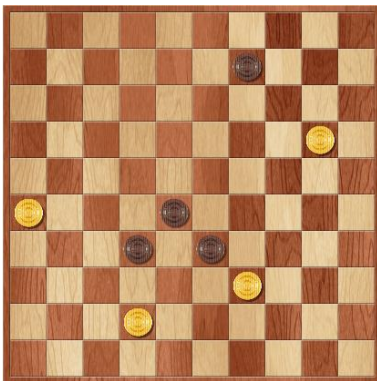
22-28 {diepte 35, 4.1 sec, 22-28,1 9-13,1 32-37,1 29-34,-3 9-14,-3980 29-33,-3984 32-38,-3990 22-27,-3990 hv 22-28}

61. 31-26 {diepte 19, 3.5 sec, 20-15,1 31-26,1 42-38,3 20-14,2710 31-27,3978 39-34,3982 42-37,3982 39-33,3988 hv 20-15}

29-33 {diepte 44, 3.5 sec, 9-13,1 29-33,1 9-14,-3 28-33,-3 29-34,-3 32-37,-3 32-38,-3992 hv 9-13}

62. 39-34 {diepte 22, 3.7 sec, 39-34,1 20-15,3 42-38,3 20-14,2714 26-21,3980 42-37,3980 hv 39-34}

32-38 {diepte 61, 0.0 sec, 32-38,1 9-13,1 9-14,-3 33-39,-3 32-37,-3 33-38,-3 hv 32-38}



Wim speelde hier met 62. 39-34 de beste zet.

Diverse dammers opperden dat 20-15 ook remise zou opleveren.

Dan zou kunnen komen:

62. 20-15 33x44 63. 15-10 28-33 64. 10-5 32-38 65. 42-37 44-50

66. 37-32 38x27 67. 5-23 9-13 68. 23-41 13-18 69. 41-47 33-39

70. 47-38 wat voor Wim veel lastiger zou zijn.

Na 62. 39-34 32-38 kan ook nog 63. 20-15 38x47 64. 15-10 9-14

65. 10x19 47-41 66. 34-30 33-39 67. 19-14 28-33 68. 14-9 39-44

69. 9-4 om de remise veilig te stellen.

63. 34-29 {diepte 27, 3.8 sec, 34-29,1 42-37,1 20-15,3 26-21,3 34-30,3 20-14,2734 hv 34-29 33x15 42x22}

33x15 {diepte 7, 0.0 sec, 33x15,1 hv 33x15 42x22}

64. 42x22 {diepte 7, 0.0 sec, 42x22,1 hv 42x22}

{diepte 61, 0.0 sec, 9-14,1 9-13,1 15-20,1 hv 9-14}