

Analyse Dragon Dammen

1. 34-29 17-22 2. 32-28 12-17 3. 40-34 7-12 4. 45-40 19-23 5. 28x19 14x23 6. 31-27 22x31 7. 36x27 1-7 8. 50-45 10-14 9. 35-30 20-25 10. 40-35 14-20 11. 44-40 5-10 12. 41-36 10-14 13. 46-41 14-19 14. 30-24 19x30 15. 35x24 17-22 16. 36-31

(16. 40-35 *may be better* 22x31 17. 36x27 11-17 18. 37-32 7-11 19. 42-37 -0.02 at 18 ply)

... 12-17 17. 38-32

(17. 31-26 *looks better* 22x31 18. 33-28 23x32 19. 38x27x36 8-12 20. 42-38 -0.17 at 19 ply) **8-12**

(9-14 !! 18. 42-38 8-12 19. 40-35 14-19 20. 48-42 19x30 21. 35x24 2-8 22. 41-36 4-9 23. 47-41 9-14 24. 31-26 22x31 25. 36x27 14-19 26. 45-40 19x30 27. 27-22 17x28 -1.22 at 19 ply)

18. 42-38 3-8

(9-14 !! 19. 40-35 4-10 20. 48-42 2-8 21. 35-30 3-9 22. 41-36 14-19 23. 49-44 10-14 24. 45-40 16-21 25. 27x16 22-28 26. 33x22 18x27 27. 29x18 20x29 28. 31x22 12x23 -1.01 at 18 ply)

19. 48-42 9-14 20. 31-26 22x31 21. 32-28 23x32 22. 38x27x36 16-21 23. 42-38 21-27 24. 37-32 11-16 25. 32x21 16x27 26. 41-37 6-11 27. 37-32 18-22 ? +0.79 at 20 ply

(14-19 *is better* 28. 32x21 19x30 29. 29-23 18x29 30. 33x24x35 11-16 31. 34-30 16x27 -0.15 at 19 ply)

28. 32x21 11-16 29. 47-41 -0.02 at 21 ply

(29. 34-30 !! 25x34x23 30. 24-19 16x27 31. 19x10 20-24 32. 47-42 7-11 33. 49-44 23-28 34. 36-31 27x36 35. 10-5 13-18 36. 5x37 18-23 37. 37x19x30 +0.72 at 20 ply)

... 16x27 30. 41-37 7-11 31. 38-32 27x38 32. 43x32 13-18 33. 32-28 11-16 34. 28-23 4-9 35. 37-32

(35. 49-43 *looks better* 9-13 36. 43-38 16-21 37. 40-35 13-19 38. 24x13 8x19x28 39. 45-40 25-30 40. 34x25 21-27 *draw at 20 ply*)

... 22-27 36. 32x21 16x27 37. 33-28 9-13 38. 49-43 ? -3.27 at 24 ply

(38. 40-35 *is better* 14-19 39. 23x14 20x9 40. 49-43 17-22 41. 28x17 12x21 42. 26x17 2-7 43. 43-38 27-31 44. 36x27 18-23 45. 29x18 13x22x31 46. 24-19 9-14 47. 19x10 15x4 48. 39-33 *draw at 23 ply*)

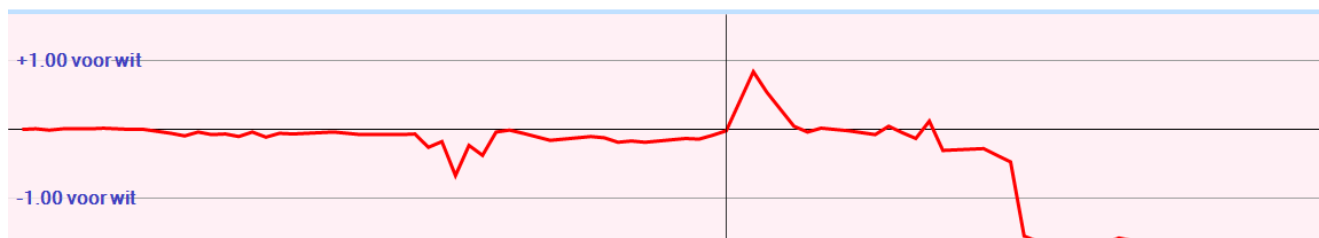
... 18-22 39. 39-33 27-32 40. 28x37 13-19 41. 24x13 8x19x28x39x30

(8x19x28x39x48 *may be better* 42. 40-35 48x30 43. 35x24 22-27 44. 45-40 17-22 45. 26-21 27x16 46. 40-34 12-18 47. 24-19 14x23 48. 34-30 25x34 49. 29x40 20-24 50. 36-31 16-21 51. 31-26 21-27 *and black wins -30.00 at 23 ply*) **42. 40-34**

-30.00 at 22 ply

(42. 40-35 *is interessant* 2-7 43. 35x24 22-27 44. 37-31 27-32 45. 45-40 12-18 46. 29-23 18x29 47. 24x33 14-19 48. 43-39 19-24 49. 40-34 7-12 50. 31-27 32x21 51. 33-28 21-27 52. 39-33 *and black wins -30.00 at 21 ply*)

... 30x39x48 43. 29-23 48x31 44. 36x27x18x7 2x11 -30.00 at 30 ply



Analyse Kingsrow

1. 34-29 {34-30(0/29)* 34-29(0/28)* 31-27(0/31)? 32-27(0/31)? 31-26(0/28)? 32-28(0/26)? 33-29(2/26)? 33-28(2/26)? 35-30(6/26)?}
17-22 {17-21(0/27)* 17-22(0/26)* 20-24(0/29)? 20-25(0/27)? 18-22(0/24)? 19-23(0/24)? 19-24(-2/25)? 18-23(-4/26)? 16-21(-6/29)?}
2. 32-28 {31-26(0/25)* 32-28(0/27)* 32-27(0/26)? 40-34(2/25)? 39-34(2/25)? 31-27(2/18)?}
12-17 {20-25(0/26)* 11-17(0/21)? 20-24(0/20)? 19-24(0/20)? 19-23(0/19)? 12-17(0/19)?}
3. 40-34 {37-32(0/18)* 31-26(0/20)? 40-34(2/19)? 31-27(2/16)? 39-34(2/15)? 38-32(4/21)? 29-24(12/8)?}
7-12 {7-12(2/18)* 16-21(0/17)? 19-23(0/12)? 20-25(0/11)? 20-24(-2/15)? 8-12(-6/6)? 19-24(-16/3)?}
4. 45-40 {45-40(2/17)* 44-40(2/13)* 37-32(2/14)? 38-32(4/19)? 31-27(6/7)? 31-26(6/5)?}
19-23 {16-21(2/16)* 1-7(0/19)? 20-25(0/16)? 20-24(0/14)? 19-23(-2/11)? 2-7(-6/6)? 19-24(-16/1)?}
5. 28x19 {28x19(-2/10)*}
14x23 {14x23(-2/9)* 13x24(-2/9)?}
6. 31-27 {31-27(-2/8)* 50-45(2/10)? 29-24(2/3)? 35-30(2/3)? 38-32(4/9)? 31-26(6/1)?}
22x31 {22x31(-2/7)*}
7. 36x27 {36x27(-2/6)* 37x26(6/2)?}
1-7 {1-7(-2/5)* 17-22(-2/6)? 10-14(-2/6)? 20-24(-4/3)? 2-7(-4/1)?}
8. 50-45 {35-30(-2/4)* 37-32(0/9)? 50-45(4/5)?}
10-14 {10-14(4/4)* 20-25(2/2)? 17-22(0/3)?}
9. 35-30 {41-36(4/3)* 37-32(4/2)? 37-31(6/1)?}
20-25 {diepte 19, 5.7 sec, 20-25,14 17-22,6 4-10,0 5-10,-2 14-19,-2 16-21,-88 23-28,-98 17-21,-100 13-19,-168 20-24,-198 18-22,-204 hv 20-25 30-24 14-20 41-36 17-22 37-31 5-10 40-35 11-17 44-40 9-14}
10. 40-35 {diepte 19, 4.7 sec, 30-24,10 40-35,16 37-32,18 41-36,20 37-31,22 38-32,24 27-22,94 29-24,100 27-21,112 33-28,214 hv 30-24 14-20 40-35 17-22 41-36 22x31 36x27 5-10 46-41 11-17 44-40}
14-20 {diepte 19, 4.8 sec, 13-19,16 5-10,14 14-20,12 17-22,10 4-10,8 14-19,0 23-28,-4 15-20,-78 16-21,-90 17-21,-104 18-22,-198 hv 13-19 37-32 9-13 41-37 4-9 46-41 14-20 41-36 17-21 33-28 11-17}
11. 44-40 {diepte 19, 5.2 sec, 30-24,12 44-40,16 37-32,16 41-36,16 38-32,22 37-31,24 45-40,32 27-22,94 27-21,114 29-24,124 33-28,212 hv 30-24 5-10 41-36 23-28 33x22 17x28 38-32 18-23 29x18 20x40 45x34}
5-10 {diepte 19, 3.7 sec, 5-10,14 17-22,14 4-10,10 9-14,-8 17-21,-56 16-21,-90 23-28,-94 13-19,-168 20-24,-196 18-22,-202 hv 5-10 30-24 17-22 41-36 22x31 36x27 11-17 46-41 17-22 41-36 22x31}
12. 41-36 {diepte 19, 3.4 sec, 30-24,14 37-32,20 41-36,20 38-32,22 49-44,24 37-31,26 29-24,78 27-22,100 27-21,122 33-28,210 hv 30-24 17-22 41-36 22x31 36x27 12-17 46-41 17-22 37-31 9-14 31-26}
10-14 {diepte 19, 3.8 sec, 10-14,22 17-22,14 17-21,-6 9-14,-8 16-21,-72 23-28,-96 20-24,-100 13-19,-168 18-22,-200 hv 10-14 46-41 14-19 30-24 19x30 35x24 4-10 37-31 10-14 40-35 14-19}
13. 46-41 {diepte 20, 5.8 sec, 37-32,18 30-24,18 47-41,20 46-41,22 49-44,24 37-31,26 38-32,26 36-31,28 29-24,58 27-22,98 27-21,108 33-28,210 hv 37-32 14-19 42-37 17-22 47-42 22x31 36x27 4-10 30-24 19x30 35x24}
14-19 {diepte 20, 5.1 sec, 14-19,22 17-22,16 4-10,4 16-21,-80 23-28,-90 13-19,-184 18-22,-200 17-21,-244 20-24,-268 hv 14-19 37-32 9-14 42-37 17-22 37-31 4-9 31-26 22x31 26x37 12-17}
14. 30-24 {diepte 20, 4.3 sec, 37-32,22 38-32,22 49-44,22 36-31,22 37-31,24 30-24,28 29-24,76 27-22,94 27-21,130 33-28,196 hv 37-32 9-14 42-37 17-22 37-31 4-9 47-42 11-17 31-26 22x31 26x37}
19x30 {diepte 7, 0.0 sec, 19x30,38 hv 19x30 35x24 9-14 40-35 14-19 36-31 19x30}
15. 35x24 {diepte 7, 0.0 sec, 35x24,40 hv 35x24 4-10 40-35 10-14 36-31 14-19 37-32}
17-22 {diepte 19, 4.0 sec, 4-10,24 17-22,22 9-14,0 23-28,-6 17-21,-42 16-21,-74 25-30,-100 13-19,-208 18-22,-208 hv 4-10 40-35 17-22 38-32 22x31 36x27 10-14 42-38 14-19 47-42 19x30}
16. 36-31 {diepte 20, 6.1 sec, 40-35,10 38-32,22 37-31,22 36-31,32 49-44,38 24-19,102 27-21,132 37-32,172 34-30,212 33-28,394 hv 40-35 22x31 36x27 4-10 41-36 11-17 37-32 10-14 33-28 14-19 27-22}
12-17 {diepte 20, 5.6 sec, 4-10,34 9-14,30 12-17,28 11-17,16 13-19,2 16-21,-8 22-28,-8 23-28,-86 25-30,-100 hv 4-10 41-36 12-17 31-26 22x31 36x27 17-21 26x17 11x31 37x26 10-14}

- 17.** 38-32 {diepte 19, 3.3 sec, 31-26,30 38-32,32 41-36,38 40-35,68 49-44,96 24-19,102 34-30,198 27-21,206 33-28,380 37-32,438 hv 31-26 22x31 33-28 23x32 38x36 7-12 42-38 9-14 38-33 4-9 37-32}
 8-12 {diepte 20, 3.7 sec, 7-12,30 9-14,28 4-10,24 8-12,20 13-19,8 17-21,2 16-21,-16 25-30,-110 22-28,-196 23-28,-492 hv 7-12 42-38 4-10 48-42 10-14 40-35 14-19 49-44 19x30 35x24 2-7}
- 18.** 42-38 {diepte 19, 3.7 sec, 41-36,40 42-38,58 31-26,72 43-38,94 24-19,104 40-35,178 27-21,202 32-28,206 49-44,272 34-30,276 33-28,396 hv 41-36 2-8 31-26 22x31 36x27 17-22 49-44 22x31 33-28 4-10 28x19}
 3-8 {diepte 21, 4.5 sec, 4-10,44 9-14,38 2-8,22 3-8,8 13-19,2 16-21,-14 22-28,-86 23-28,-92 25-30,-104 17-21,-294 hv 4-10 48-42 10-14 41-36 14-19 40-35 19x30 35x24 2-8 47-41 9-14}
- 19.** 48-42 {diepte 21, 5.6 sec, 48-42,8 40-35,82 41-36,84 49-44,94 24-19,100 31-26,196 32-28,210 27-21,220 34-30,272 47-42,294 33-28,376 hv 48-42 9-14 40-35 14-19 41-36 19x30 35x24 4-9 45-40 9-14 47-41}
 9-14 {diepte 22, 5.5 sec, 9-14,8 13-19,-2 4-10,-14 16-21,-18 17-21,-62 22-28,-86 23-28,-92 25-30,-548 hv 9-14 40-35 14-19 41-36 19x30 35x24 16-21 27x16 23-28 32x23 22-27}
- 20.** 31-26 {diepte 21, 4.7 sec, 40-35,10 41-36,10 31-26,20 24-19,108 49-44,134 32-28,204 27-21,206 34-30,252 33-28,402 hv 40-35 14-19 41-36 19x30 35x24 16-21 27x16 23-28 32x23 22-27 31x22}
 22x31 {diepte 7, 0.0 sec, 22x31,36 hv 22x31 32-28 23x32 38x36 4-9 33-28}
- 21.** 32-28 {diepte 20, 4.0 sec, 32-28,18 40-35,60 41-36,94 24-19,118 49-44,134 26-21,160 33-28,174 32-27,224 34-30,274 hv 32-28 23x32 38x36 16-21 36-31 21-27 31x22 18x27 40-35 13-18 42-38}
 23x32 {diepte 7, 0.0 sec, 23x32,26 hv 23x32 38x36 18-22 40-35 4-9 37-32 22-27 32x21}
- 22.** 38x36 {diepte 7, 0.0 sec, 38x36,28 hv 38x36 4-9 42-38 17-21 26x17 11x22 38-32 22-27}
 16-21 {diepte 19, 4.1 sec, 17-22,22 16-21,18 4-9,14 18-22,10 4-10,8 17-21,6 14-19,0 18-23,-98 25-30,-110 13-19,-178 hv 17-22 37-32 22-27 32x21 16x27 33-28 11-17 28-23 7-11 43-38 17-22}
- 23.** 42-38 {diepte 19, 3.7 sec, 36-31,16 43-38,18 33-28,18 37-31,22 42-38,22 40-35,32 24-19,96 29-23,108 34-30,212 49-44,288 37-32,320 hv 36-31 21-27 31x22 18x27 42-38 11-16 37-32 7-11 32x21 16x27 41-37}
 21-27 {diepte 19, 3.8 sec, 21-27,22 11-16,12 4-10,0 14-19,-10 18-22,-12 4-9,-16 18-23,-110 25-30,-138 13-19,-180 17-22,-194 hv 21-27 37-32 11-16 32x21 16x27 33-28 7-11 28-23 17-22 40-35 14-19}
- 24.** 37-32 {diepte 19, 3.9 sec, 37-32,20 37-31,22 47-42,26 40-35,38 38-32,94 49-44,102 24-19,110 26-21,128 36-31,146 29-23,196 34-30,206 33-28,528 hv 37-32 11-16 32x21 16x27 41-37 7-11 37-32 17-22 32x21 22-28 33x22}
 11-16 {diepte 19, 3.7 sec, 11-16,24 17-22,20 17-21,8 14-19,0 4-10,-12 4-9,-30 18-22,-38 27-31,-94 25-30,-102 18-23,-122 13-19,-292 hv 11-16 32x21 16x27 41-37 7-11 37-32 17-22 32x21 22-28 33x22 18x16}
- 25.** 32x21 {diepte 7, 0.0 sec, 32x21,32 hv 32x21 16x27 41-37 4-9 33-28 17-22 28x17 12x21 26x17}
 16x27 {diepte 7, 0.0 sec, 16x27,30 hv 16x27 41-37 7-11 38-32 27x38 43x32 4-9 37-31}
- 26.** 41-37 {diepte 19, 4.0 sec, 41-37,16 33-28,22 40-35,76 38-32,92 36-31,104 24-19,112 26-21,132 47-42,186 29-23,192 34-30,206 49-44,368 hv 41-37 7-11 37-32 17-22 32x21 22-28 33x22 18x16 38-32 4-9 36-31}
 6-11 {diepte 19, 5.4 sec, 7-11,16 4-9,10 17-22,8 6-11,6 4-10,1 18-22,0 17-21,-14 27-31,-84 14-19,-86 27-32,-100 25-30,-116 18-23,-180 13-19,-286 hv 7-11 37-32 17-22 32x21 11-16 38-32 16x38 33x42 4-9 42-37 6-11}
- 27.** 37-32 {diepte 19, 4.4 sec, 37-32,4 37-31,12 33-28,12 47-41,16 40-35,20 47-42,22 38-32,92 49-44,92 36-31,94 26-21,104 24-19,110 34-30,194 29-23,194 hv 37-32 17-22 32x21 22-28 33x22 18x16 38-32 11-17 43-38 17-22 36-31}
 18-22 {diepte 19, 3.3 sec, 17-22,2 14-19,0 11-16,-4 4-9,-24 4-10,-60 18-22,-62 27-31,-104 25-30,-118 18-23,-120 13-19,-286 17-21,-384 hv 17-22 32x21 22-28 33x22 18x16 36-31 11-17 38-32 14-19 40-35 19x30}



Jos speelt 27. ... 18-22?

Zijn gelijke stand krijgt een deuk.

Willem-Peter kan profiteren door 28. 32x21 11-16 29. 34-30 25x23 30. 24-19 16x27 31. 19x10 20-24 32. 47-42 12-18 33. 39-34 23-28 34. 33-29 24x33 35. 38x29 8-12 36. 10-5 28-32 37. 5x41 22-28 38. 41x8 2x13 met schijfwinst.

(LET OP: 30. ... 13x24 31. 40-34 16x27 32. 34-29 23x34 33. 39x10 mag niet)

Willem-Peter speelde 29. 47-41 en verspeelde deze kans.

Jos had 17-22 moeten spelen in de diagramstand.

Na 27. 37-32 17-22 28. 32x21 22-28 29. 33x22 18x16 resteert een gelijke stand.

- 28.** 32x21 {diepte 7, 0.0 sec, 32x21,10 hv 32x21 11-16 38-32 16x38 43x32 12-18 36-31 7-11}
11-16 {diepte 20, 4.6 sec, 11-16,-58 14-19,-80 22-28,-80 4-9,-82 4-10,-88 13-18,-134 13-19,-152 25-30,-192 22-27,-194 12-18,-472 hv 11-16 34-30 25x23 24-19 16x27 19x10 20-24 47-42 7-11 49-44 4-9}
- 29.** 47-41 {diepte 20, 5.0 sec, 34-30,-60 47-41,2 47-42,4 38-32,6 40-35,18 24-19,102 49-44,110 36-31,114 29-23,192 33-28,404 hv 34-30 25x23 24-19 16x27 19x10 20-24 47-42 7-11 49-44 4-9 39-34}
16x27 {diepte 7, 0.0 sec, 16x27,18 hv 16x27 38-32 27x38 43x32 4-9 32-28 17-21 26x17}
- 30.** 41-37 {diepte 19, 3.5 sec, 38-32,6 41-37,12 40-35,24 24-19,106 26-21,142 29-23,198 34-30,204 49-44,220 33-28,430 36-31,474 hv 38-32 27x38 43x32 7-11 41-37 13-18 37-31 14-19 24x13 8x19 49-43}
7-11 {diepte 19, 3.6 sec, 7-11,6 4-10,4 4-9,-4 14-19,-4 13-19,-70 13-18,-76 25-30,-126 22-28,-174 27-32,-190 27-31,-190 17-21,-222 12-18,-294 hv 7-11 38-32 27x38 43x32 11-16 49-43 22-27 32x21 16x27 33-28 27-32}
- 31.** 38-32 {diepte 19, 3.7 sec, 38-32,4 37-32,6 37-31,8 40-35,16 24-19,110 26-21,126 49-44,130 36-31,166 34-30,190 29-23,204 33-28,440 hv 38-32 27x38 43x32 13-18 37-31 11-16 31-27 22x31 26x37 17-22 32-28}
27x38 {diepte 7, 0.0 sec, 27x38,2 hv 27x38 43x32 4-9 32-28 11-16 37-31 12-18}
- 32.** 43x32 {diepte 22, 4.6 sec, 43x32,4 33x42,6 hv 43x32 13-18 32-28 11-16 37-31 14-19 24x13 8x19 31-27 22x31 36x27}
13-18 {diepte 19, 4.3 sec, 13-18,8 11-16,2 4-9,-8 13-19,-10 12-18,-10 4-10,-22 2-7,-34 22-28,-86 14-19,-88 22-27,-108 25-30,-130 17-21,-416 hv 13-18 37-31 11-16 40-35 4-9 45-40 2-7 49-44 18-23 29x27 20x38}
- 33.** 32-28 {diepte 18, 3.7 sec, 32-28,4 37-31,10 40-35,20 49-44,54 34-30,108 26-21,132 36-31,140 49-43,172 24-19,200 33-28,350 32-27,356 29-23,428 hv 32-28 11-16 28-23 14-19 23x14 20x9 37-32 9-13 32-28 13-19 24x13}
11-16 {diepte 19, 3.6 sec, 11-16,4 18-23,-86 22-27,-98 2-7,-98 25-30,-138 14-19,-182 4-9,-362 4-10,-376 17-21,-434 8-13,-528 hv 11-16 28-23 14-19 23x14 20x9 36-31 9-13 37-32 13-19 24x13 8x19}
- 34.** 28-23 {diepte 19, 3.9 sec, 28-23,6 37-32,10 49-43,14 37-31,14 36-31,14 49-44,46 40-35,62 26-21,76 24-19,272 29-23,388 34-30,602 hv 28-23 14-19 23x14 20x9 37-32 22-27 32x21 16x27 33-28 9-14 49-43}
4-9 {diepte 19, 5.3 sec, 14-19,10 16-21,8 4-9,6 8-13,2 22-27,1 2-7,-16 4-10,-92 22-28,-116 25-30,-148 17-21,-224 hv 14-19 23x14 20x9 36-31 9-13 37-32 16-21 40-35 22-28 33x11 12-17}
- 35.** 37-32 {diepte 20, 5.3 sec, 37-31,-18 49-43,-3 37-32,36 49-44,48 36-31,50 40-35,52 24-19,138 26-21,144 23-19,170 34-30,308 33-28,366 hv 37-31 9-13 49-43 13-19 24x13 8x28 43-38 25-30 34x25 16-21 29-24}
22-27 {diepte 21, 4.9 sec, 9-13,32 22-27,26 16-21,0 2-7,-48 8-13,-114 25-30,-124 17-21,-232 14-19,-600 22-28,-704 hv 9-13 32-28 13-19 24x13 18x9 40-35 8-13 49-43 13-19 36-31 16-21}
- 36.** 32x21 {diepte 7, 0.0 sec, 32x21,-12 hv 32x21 16x27 33-28 9-13 39-33 2-7 49-43 14-19}
16x27 {diepte 7, 0.0 sec, 16x27,18 hv 16x27 49-43 9-13 33-28 18-22 39-33 13-19}
- 37.** 33-28 {diepte 19, 3.6 sec, 49-43,18 40-35,32 33-28,36 49-44,158 26-21,168 24-19,174 34-30,248 23-19,272 36-31,380 hv 49-43 9-13 43-38 17-22 38-32 27x38 33x42 22-27 40-35 14-19 23x14}
9-13 {diepte 19, 4.0 sec, 9-13,38 8-13,3 2-7,-36 25-30,-84 27-32,-86 27-31,-182 18-22,-218 14-19,-472 17-21,-590 17-22,-786 hv 9-13 40-35 14-19 23x14 20x9 45-40 17-21 26x17 12x21 39-33 8-12}

38. 49-43 {diepte 20, 4.3 sec, 40-35,80 49-44,104 39-33,144 26-21,202 36-31,290 49-43,368 34-30,442 28-22,448 23-19,454 24-19,860 hv 40-35 14-19 23x14 20x9 39-33 2-7 45-40 17-22 28x17 12x21 26x17}
 18-22 {diepte 20, 5.5 sec, 18-22,364 14-19,16 2-7,-28 25-30,-40 27-32,-98 27-31,-184 17-21,-546 13-19,-548 17-22,-730 hv 18-22 43-38 22x35 23-19 14x23 29x9 20x40 45x34 8-13 9x7 2x11}

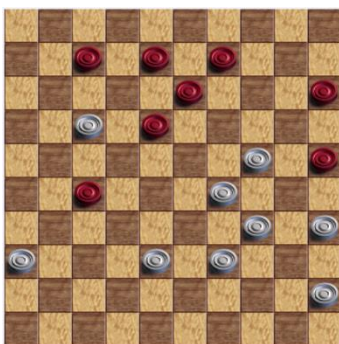


Willem-Peter speelt 38. 49-43?

Hij maakt de fout die leidt naar de winst voor Jos.

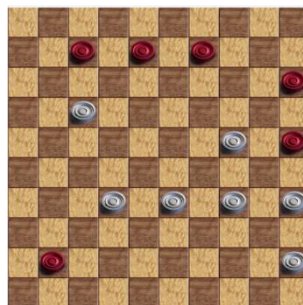
Hier had moeten 40-35 met het mogelijke volgende verloop:

38. 40-35 14-19 39. 23x14 20x9 40. 49-43 17-22 41. 28x17 12x21 42. 26x17 2-7
 43. 43-38 18-23 44. 29x18 13x11 45. 24-19 11-17 46. 45-40 7-12 47. 39-33 17-21
 48. 35-30 21-26 49. 33-28 12-17 50. 19-14 9x20 51. 28-22 17x28 52. 30-24 20x29
 53. 34x21 26x17 54. 40-34 8-13 55. 36-31 13-19 56. 31-27 19-24 57. 38-33 24-30
 58. 27-21 30x28 59. 21x12 remise



Hier leidt 43. ... 27-31 ook niet tot winst:

43. 43-38 27-31 44. 36x27 18-23 45. 29x18 13x31 46. 39-33 31-36
 47. 38-32 36-41 48. 24-19 9-13 49. 19-14 13-19 50. 14x23 41-47 51. 33-28 8-13
 52. 32-27 47-41 53. 27-21 13-19 54. 23x14 41x10 55. 21-16 10-28 56. 16-11 7x16
 57. 17-12 25-30 58. 34x25 16-21 59. 25-20 15x24 60. 35-30 24x35 61. 12-8



Hier is na 47. ... 36-41 de remise al een feit!

39. 39-33 {diepte 21, 5.4 sec, 40-35,450 36-31,534 23-19,554 39-33,610 43-38,620 23-18,634 24-19,946 34-30,968 26-21,2436 hv 40-35 22x44 34-30 25x34 29x49 20x18 43-39 13-19 49-43 18-23 45-40}
 27-32 {diepte 20, 5.9 sec, 27-32,458 17-21,266 13-19,16 12-18,3 13-18,-3 2-7,-8 14-19,-24 25-30,-50 27-31,-676 hv 27-32 28x37 13-19 24x13 8x48 26-21 48x26 29-23 20-24 21-16 24-30}
40. 28x37 {diepte 7, 0.0 sec, 28x37,170 hv 28x37 13-19 24x13 8x48 34-30 25x23 40-35 48x31 36x29}
 13-19 {diepte 20, 4.6 sec, 13-19,488 22-27,-96 13-18,-132 2-7,-150 14-19,-174 25-30,-194 12-18,-202 22-28,-220 17-21,-372 hv 13-19 24x13 8x48 36-31 48x30 37-32 30-24 29-23 24-35 40-34 35-40}
41. 24x13 {diepte 7, 0.0 sec, 24x13,192 hv 24x13 8x48 29-23 48x30 40-34 30x31 36x7 2x11 23-18}
 8x30 {diepte 24, 4.8 sec, 8x48,910 8x30,290 hv 8x48 29-23 48x30 23-19 30x13 40-35 22-27 36-31 27x36 37-32 36-41}
42. 40-34 {diepte 20, 3.6 sec, 40-35,232 37-31,366 37-32,386 36-31,428 43-38,428 29-23,460 29-24,524 26-21,542 43-39,546 40-34,1120 hv 40-35 22-27 35x24 2-8 43-38 17-22 37-32 8-13 32x21 12-18 45-40}
 30x48 {diepte 7, 0.0 sec, 30x48,250 hv 30x48 29-23 48x31 36x7 2x11 23-18 25-30 26-21 17x26}
43. 29-23 {diepte 19, 3.4 sec, 36-31,2516 37-31,2600 37-32,2682 26-21,3976 29-23,3982 45-40,3984 29-24,3988 hv 36-31 25-30 45-40 22-27 31x11 48x31 26x37 12-17 11x22 30-34 40-35}
 48x31 {diepte 7, 0.0 sec, 48x31,286 hv 48x31 36x7 2x11 23-18 25-30 26-21 17x26 45-40}
44. 36x7 {diepte 7, 0.0 sec, 36x7,216 hv 36x7 2x11 23-18 14-19 26-21 17x26 45-40}
 2x11 {diepte 7, 0.0 sec, 2x11,220 hv 2x11 26-21 17x26 23-18 26-31}
 {diepte 32, 3.5 sec, 23-18,3986 26-21,3988 45-40,3988 23-19,3992 hv 23-18 14-19 18-12 17x8 26-21 20-24 45-40 24-30 40-35 19-24 21-16}